

**10/100/1000BASE-T Magnetics Module**

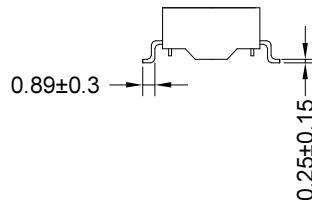
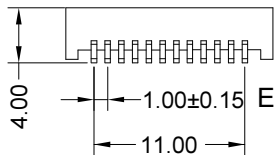
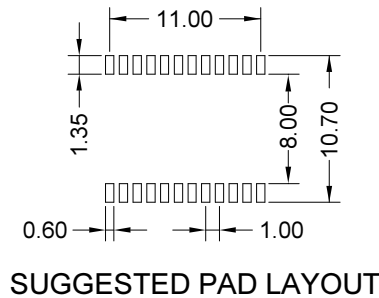
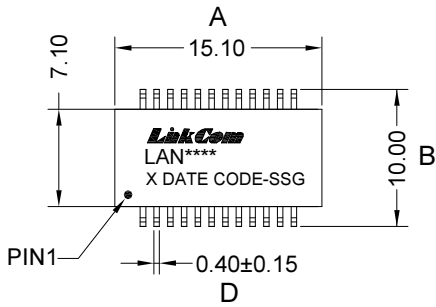
- Meets IEEE 802.3af standard
- RoHS Compliant
- Single port configuration
- Suitable for End-span PoE application with 350mA current capability
- Operating Temperature: -40°C~+85°C

**Electrical Specifications @25°C**

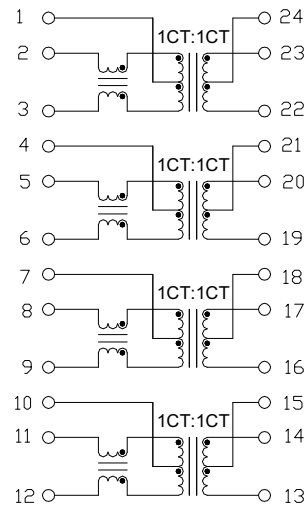
OCL:	350uH Min. @100KHz/0.1V with 8mA DC Bias		
Hi-POT :	1500Vrms.		
Turn Ratio:	1CT:1CT±3%		
Insertion Loss:	-1.0dB Max.@1-100MHz		
Return Loss:	1-30MHz	60-80MHz	100MHz
	-18dB Min.	-12dB Min.	-10dB Min.
Cross Talk :	30MHz	60MHz	100MHz
	-40dB Min.	-35dB Min.	-30dB Min.
D.C.M.R.	30MHz	60MHz	100MHz
	-40dB Min.	-35dB Min.	-30dB Min.

**Dimensions**

( Units: mm, Unless otherwise specified, all tolerances are ±0.25)



**Schematic**



**Mark**

- 1.LAN\*\*\*\*----LAN2241
2. X----PRODUCT LINE or BLANK
3. DATE CODE----YYWW
4. SS----75 or BLANK
5. G----RoHS

**Package info**

LAN2241-75R— Tape Reel