

CLB Series



INCORE APP Download



App Store for iOS



Play Store for Android

PRODUCT HIGHLIGHT:

- Universal AC input from 100 - 277 VAC +/-10%
- 1-channel output for Brightness or Dim-to-Warm control
- 2-channel output for Tunable White color temperature control
- Built-in dim-to-off function
- Wireless dimming Range 1-100% via INCORE APP
- Optional Auxiliary Output: 12V/200mA (See Note 1)
- Operating Ambient Temp.: -20°C ~+50°C
- EMI: FCC Part 15 Class B / FCC Part 15 Class C
- Warranty: 2 years (refer to warranty policy)
- Compatible with Constant Current LED Power Supply
- Comply with UL60730

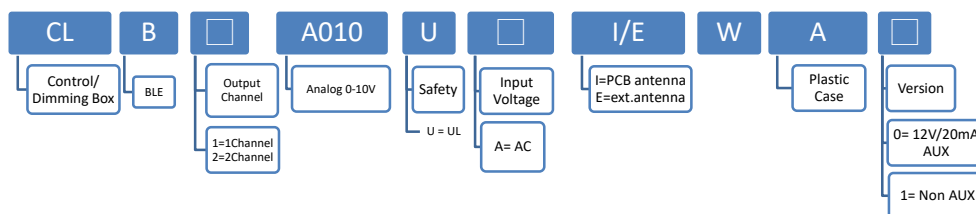
BLE MESH FEATURES:

- Auto pairing
- Transmission Range: 120m (in 4 jumps)
- RF Communication Type: 2.4 GHz
- High Speed Communication: <100ms
- Support iBeacon
- Multiple Host
- Dimming, CCT Tuning, Scheduling, Group Control
- Remote Control and Wall Switch Accessory Available

PRODUCT SPECIFICATION

MODEL	Supply Voltage	Control Interface	Output	Channel No.	Antenna	Dimension (L*W*H)	Case
CLB1A010UAWEA1	100~277Vac	Bluetooth	0~10V	1	External	115*43*29mm	Plastic case
CLB2A010UAWEA1	100~277Vac	Bluetooth	0~10V	2	External	115*43*29mm	Plastic case

Model Number Code



Input Specifications

	Min.	Typ.	Max.	Units	Conditions/Description
Input Voltage Range	90		305	Vac	AC input
Input Frequency Range	47		63	Hz	
Input Current			3	A	
Surge protection		1		KV	
Relay	(ON/OFF)				Comply with TV-5 level

Output Specifications

	Output Range	Units	Conditions/Description
Output Control Interface	0-10	Vdc	

Auxiliary Output Specifications

	Min.	Typ.	Max.	Units	Conditions/Description
Output Voltage Range		12		Vdc	Optional
Output Current Range		0.2		A	Optional

Protection Functions

	Support (Yes/No)	Conditions/Description
Short Circuit Protection	Yes	

Environmental Conditions

	Min.	Typ.	Max.	Units	Conditions/Description
Operating Temperature (Ta)	-20		50	°C	Non-condensing
Operating Humidity			90	%RH	Non-condensing
Storage Temperature	-20		80	°C	Non-condensing
Storage Humidity	10		95	%RH	Non-condensing
Weight		60		g	

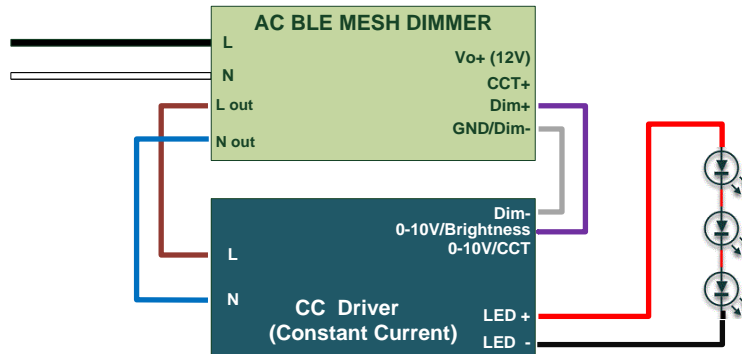
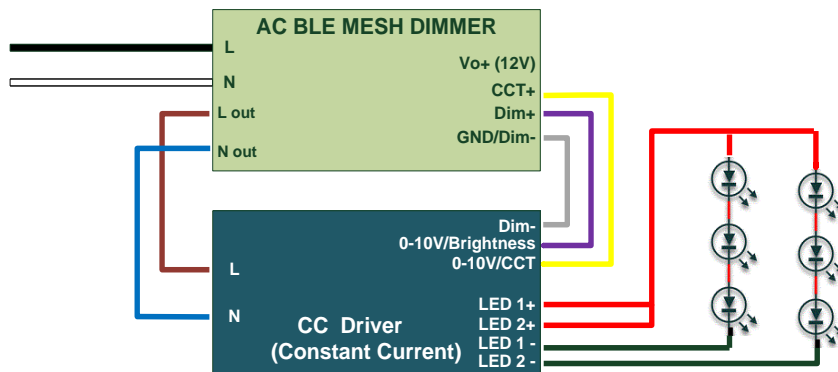
EMC Compliance and Safety

Safety Compliance	
Safety	UL 60730
EMC Compliance	
Conducted and Radiated Emission	EMI: FCC Part 15 Class B / FCC Part 15 Class C
FCC ID	2AOC5LCBTMDXX

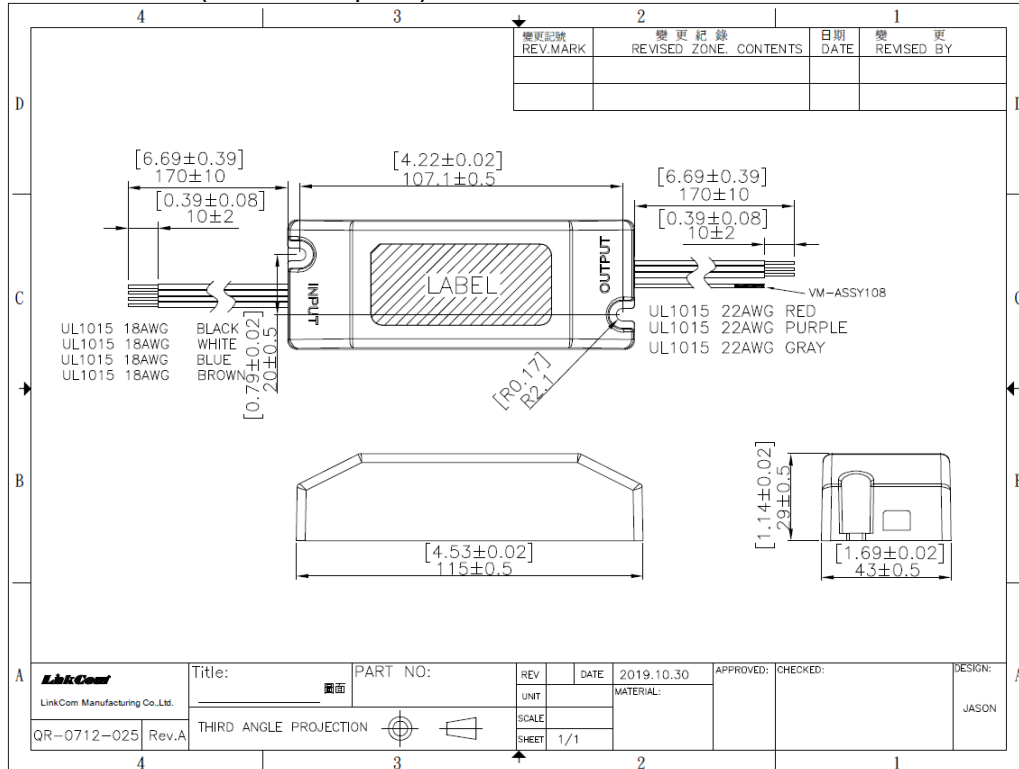
Notes:

- (1) Auxiliary output function is customized upon request. Please contact LinkCom sales team if need AUX function.
- (2) External antenna :VM-ASSY108

CLB Series

AC BLE MESH DIMMER (1ch with Aux source 12V)AC BLE MESH DIMMER (2ch with Aux source 12V)

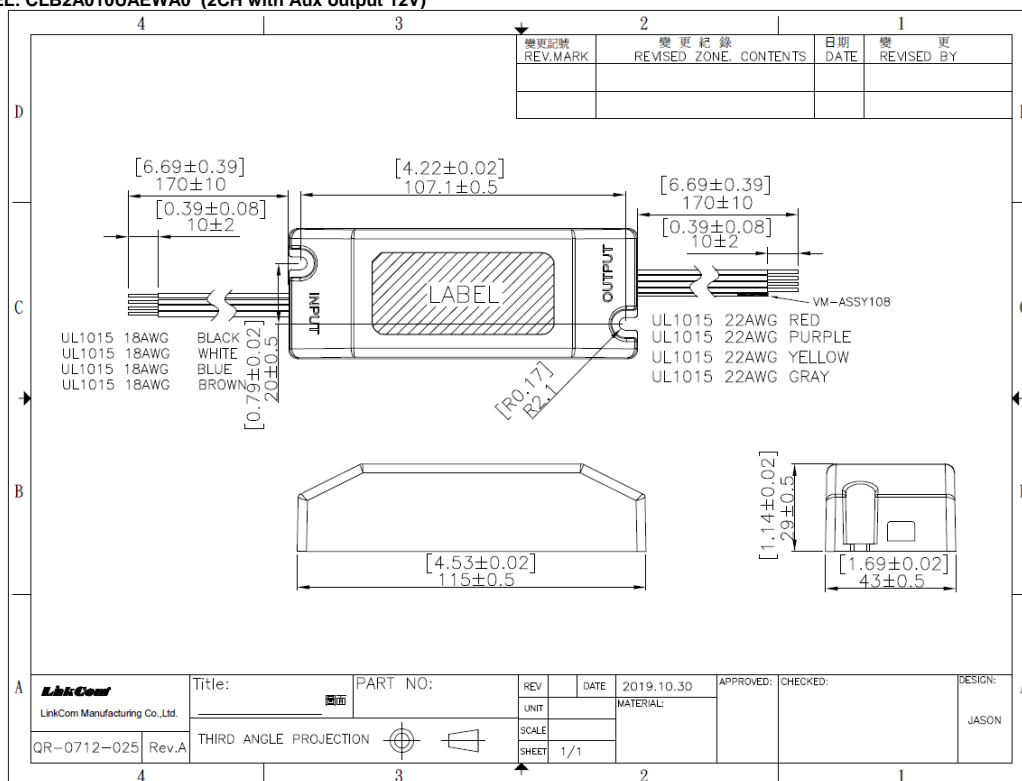
※In the figure, Vo+(12V) and CCT+ will vary depending on the model.

DIMENSIONS**MODEL: CLB1A010UA0 (1CH with Aux output 12V)**

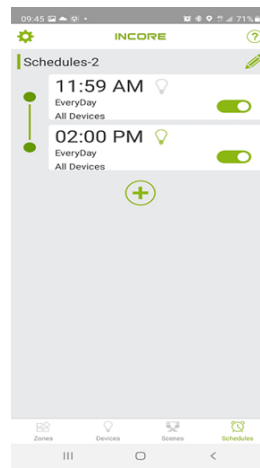
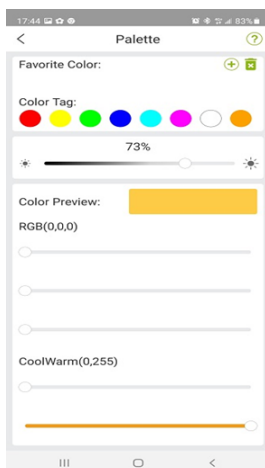
CLB Series

DIMENSIONS

MODEL: CLB2A010UAWEA0 (2CH with Aux output 12V)



APP APPLICATION



1-ch

2-ch

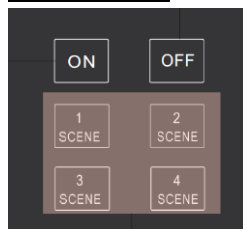
Accessories

Description	P/N	Power supply
Remote Control	IRCB_2CW_U18SA0-00G	Battery AAA*2
Touch Panel	IBRS-T6A-00G	Battery CR2032*2
BLE PIR Sensor	IBAC0C-PIRE0	L/N AC Input 85-305Vac

Remote Control Shape



Portable Touch Panel



BLE PIR Sensor

