

CLB Series



INCORE APP Download



App Store for iOS



Play Store for Android

PRODUCT HIGHLIGHT:

- DC Input 12~30 V
- 1-channel output for Brightness or Dim-to-Warm control
- 2-channel output for Tunable White color temperature control
- Built-in dim-to-off function
- Wireless dimming Range 1-100% via INCORE APP
- Operating Ambient Temp.: -20°C ~+50°C
- EMI: FCC Part 15 Class B / FCC Part 15 Class C
- Warranty: 2 years (refer to warranty policy)
- Compatible with Constant Current LED Power Supply

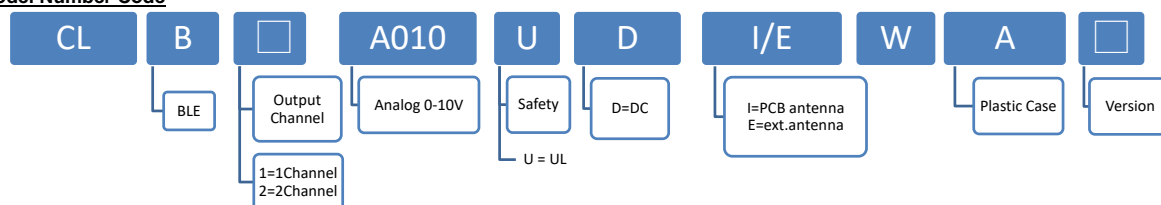
BLE MESH FEATURES:

- Auto pairing
- Transmission Range: 120m (in 4 jumps)
- RF Communication Type: 2.4 GHz
- High Speed Communication: <100ms
- Support iBeacon
- Multiple Host
- Dimming, CCT Tuning, Scheduling, Group Control
- Remote Control and Wall Switch Accessory Available

PRODUCT SPECIFICATION

MODEL	Supply Voltage	Control Interface	Output	Channel No.	Antenna	Dimension (L*W*H)	Case
CLB1A010UDEWA0	12 ~ 30 Vdc	Bluetooth	0~10V	1	External	66.8*35.2*24.2mm	Plastic case
CLB2A010UDEWA0	12 ~ 30 Vdc	Bluetooth	0~10V	2	External	66.8*35.2*24.2mm	Plastic case

Model Number Code



Input Specifications

	Min.	Typ.	Max.	Units	Conditions/Description
Input Voltage Range	12		30	Vdc	for dc Voltage
Input Frequency Range		N/A		Hz	for dc Voltage
Input Current			0.5	A	for dc 12~30V

Output Specifications

	Output Range	Units	Conditions/Description
Output Control Interface	0-10	Vdc	

Protection Functions

	Support (Yes/No)	Conditions/Description
Short Circuit Protection	Yes	

Environmental Conditions

	Min.	Typ.	Max.	Units	Conditions/Description
Operating Temperature (Ta)	-20		50	°C	Non-condensing
Operating Humidity			90	%RH	Non-condensing
Operating Case Temperature (Tc)		N/A		°C	
Storage Temperature	-20		80	°C	Non-condensing
Storage Humidity	10		95	%RH	Non-condensing
Weight		30		g	

EMC Compliance and Safety

EMC Compliance	
Conducted and Radiated Emission	EMI: FCC Part 15 Class B / FCC Part 15 Class C
FCC ID	2AOC5LCBTMDXX

Notes:

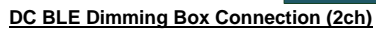
(1) External antenna :VM-ASSY108

Linkcom Manufacturing Co., Ltd.

5F., No. 127, Ln. 235, Baoqiao Rd., Xindian Dist., New Taipei City 231-45, Taiwan • T: +886-2-8919-1380 • F: +886-2-8919-1370 •
www.linkcom.com.tw

Rev. 1.1

DC BLE Dimming Box Connection (1ch)



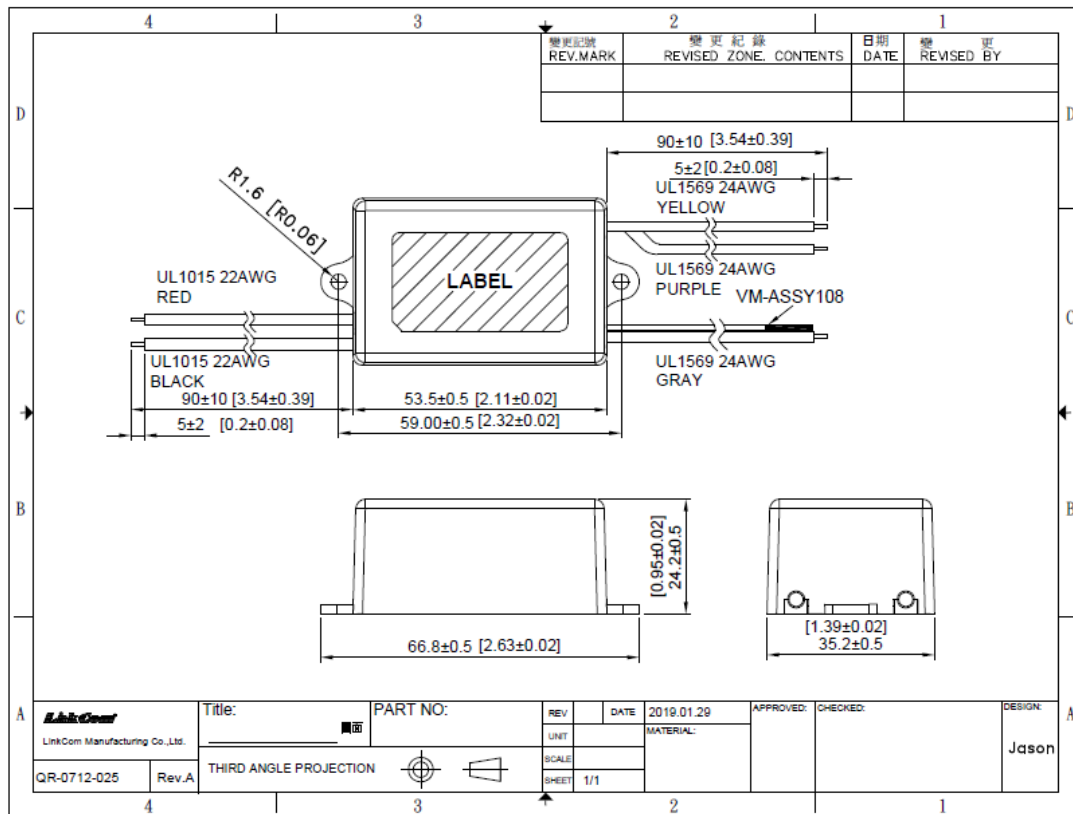
MODEL: CLB1A010UDEWA0 (1CH)



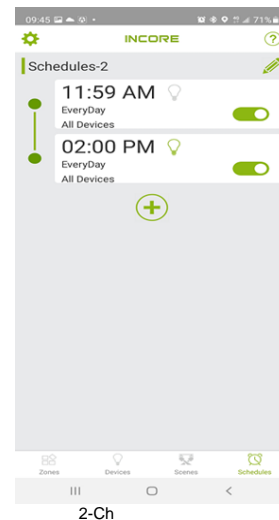
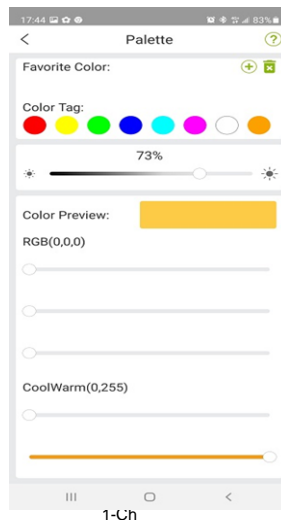
CLB Series

DIMENSIONS

MODEL: CLB2A010UDEWA0 (2CH)



APP APPLICATION



CLB Series

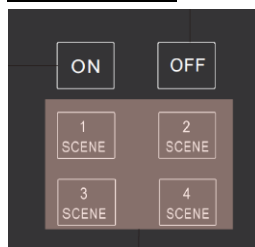
Accessories

Description	P/N	Power supply
Remote Control	IRCB_2CW_U18SA0-00G	Battery AAA*2
Touch Panal	IBRS-T6A-00G	Battery CR2032*2
BLE PIR Sensor	IBAC0C-PIRE0	L/N AC Input 85-305Vac

Remote Control Shape



Portable Touch Panal



BLE PIR Sensor



* Please contact sales@linkcom.com.tw, sales@linkcomusa.com for more information

* REFERENCE: www.linkcom.com.tw

Linkcom Manufacturing Co., Ltd.

5F., No. 127, Ln. 235, Baoqiao Rd., Xindian Dist., New Taipei City 231-45, Taiwan • T: +886-2-8919-1380 • F: +886-2-8919-1370 •
www.linkcom.com.tw

Rev. 1.1