

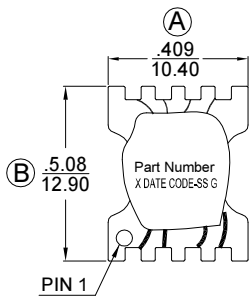
Toroidal Coil

- RoHS Compliant
- Operating Temperature -40°C to +85°C

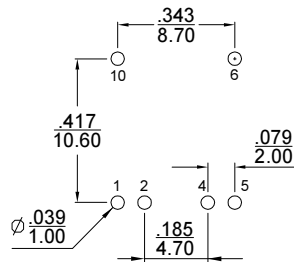
Electrical Specifications @25°C	
Inductance:	PIN 1-5= 370uH Min. @ 10KHz/0.1V (PIN 2,4 Shorted)
Leakage Inductance:	PIN 1-5= 1.0uH Max. @ 100KHz/0.1V (PIN 2,4 Shorted;10,6 Shorted)
D.C.R	PIN 1-4 =2-5= 90 mohm Max.
	PIN 10-6 = 110 mohm Max.
Turn Ratio:	PIN 1-5 : PIN10-6 = 1±3% :1(PIN 2,4 Shorted)
Hi-POT :	PRI. – SEC. =4300VAC/60Hz/2Seconds/1mA

Dimensions

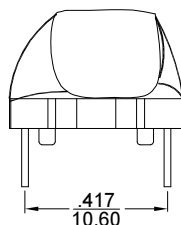
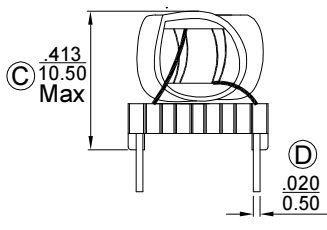
(Units: $\frac{\text{Inches}}{\text{mm}}$, Unless otherwise specified, all tolerances are $\pm\frac{.010}{0.25}$)



TOP VIEW

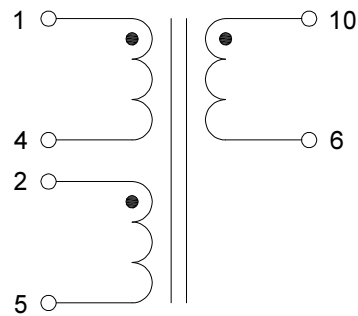


SUGGESTED PAD LAYOUT



*Square or circular pin willn't influence the eletrical characteristic

Schematic



Mark

1. Part Number---LTC0326
2. X---PRODUCT LINE OR BLANK
3. DATE CODE----YYWW
4. SS----50 OR BLANK
5. G----RoHS