

Gate Drive Transformer

- RoHS Compliant
- Operating Temperature -40°C to +85°C
- 9.7 Volt-usec Max Volt-Time Value

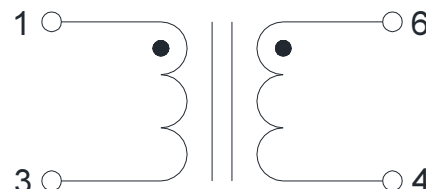
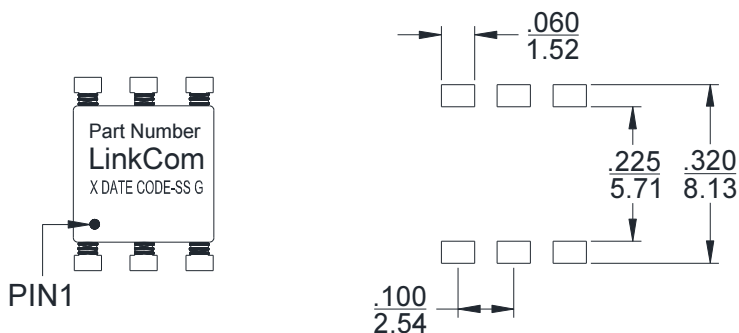
Electrical Specifications @25°C

Inductance	PIN1-3 = 785uH Min. @ 100kHz/0.1V/Series
Leakage Inductance	PIN1-3 = 0.46uH Max. @ 100kHz/0.1V/Series (PIN6-4 shorted)
D.C.R.	PIN1-3 = 600 mohm Max.
	PIN6-4 = 600 mohm Max.
Turn Ratio	PIN1-3 : PIN6-4 = 1±3% : 1
Hi-POT	1500Vdc/1Seconds/1mA

Dimensions

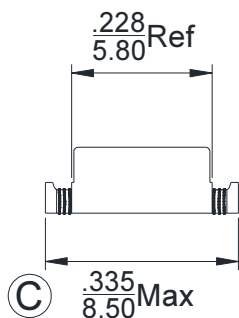
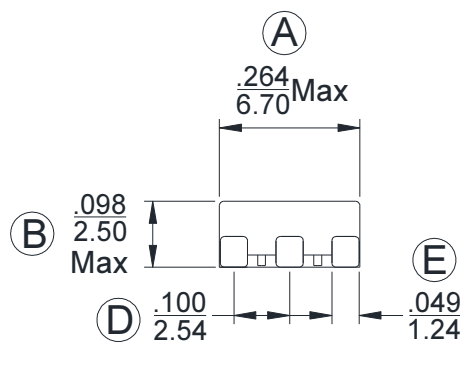
(Units: $\frac{\text{Inches}}{\text{mm}}$, Unless otherwise specified, all tolerances are $\pm\frac{.010}{0.25}$)

Schematic



TOP VIEW

SUGGESTED PAD LAYOUT



Mark

1. Part Number----LTC0557
2. X----PRODUCT LINE or BLANK
3. DATE CODE----YYWW
4. SS----50 OR BLANK
5. G----RoHS

Package info

LTC0557-50R - Reel