

10W-BPHE Series

Constant Current Mode



FEATURES:

- AC Input 100~240VAC
- Protection: SCP / OVP / OTP
- Flicker Free
- High Operating Ambient Temp.: -20°C~+60°C
- Surge protection: L-N 0.5 KV
- Safety: UL 1310 / PSE
- EMI: FCC / CE
- IP 67 Compliant
- Warranty: 2 years (refer to warranty policy)
- RoHS Compliant

PRODUCT SPECIFICATION

MODEL	DC OUTPUT POWER (W)	DC OUTPUT VOLTAGE (V)	OUTPUT CURRENT (A)	OUTPUT CURRENT TOLERANCE	EFFICIENCY (Typ.)				Power Factor (Typ.)			
					100VAC	120VAC	200VAC	240VAC	100VAC	120VAC	200VAC	240VAC
BPHE010C201	9.6	3-48	0.216-0.264	10%	74.0%	74.0%	75.0%	74.0%	N/A	N/A	N/A	N/A
BPHE010C251	10	3-40	0.234-0.286	10%	74.0%	74.0%	75.0%	74.0%	N/A	N/A	N/A	N/A
BPHE010C301	10.88	3-34	0.288-0.352	10%	74.0%	74.0%	75.0%	74.0%	N/A	N/A	N/A	N/A
BPHE010C351	10.5	3-30	0.333-0.407	10%	74.0%	74.0%	75.0%	74.0%	N/A	N/A	N/A	N/A
BPHE010C401	10	3-25	0.369-0.451	10%	74.0%	74.0%	75.0%	74.0%	N/A	N/A	N/A	N/A
BPHE010C451	10.8	3-24	0.414-0.506	10%	74.0%	74.0%	75.0%	74.0%	N/A	N/A	N/A	N/A
BPHE010C501	10	3-20	0.459-0.561	10%	74.0%	74.0%	75.0%	74.0%	N/A	N/A	N/A	N/A
BPHE010C601	10.2	3-17	0.549-0.671	10%	74.0%	74.0%	75.0%	74.0%	N/A	N/A	N/A	N/A
BPHE010C701	10.5	3-15	0.636-0.781	10%	74.0%	74.0%	75.0%	74.0%	N/A	N/A	N/A	N/A
BPHE010C751	9.75	3-13	0.684-0.836	10%	74.0%	74.0%	75.0%	74.0%	N/A	N/A	N/A	N/A
BPHE010C801	9.6	3-12	0.729-0.891	10%	74.0%	74.0%	75.0%	74.0%	N/A	N/A	N/A	N/A

Input Specifications

	Min.	Typ.	Max.	Units	Conditions/Description
Input Voltage Range	90		264	Vac	
Input Frequency Range	47		63	Hz	
Input Current			0.3	A	110VAC in
Inrush Current			40	A	240VAC in, 25°C Cold start
Leakage Current			0.75	mA	264VAC in
Power Factor (PF)		N/A			
Total Harmonics Distortion (THD)		N/A		%	

Output Specifications

	Min.	Typ.	Max.	Units	Conditions/Description
Line Regulation		±3		%	
Load Regulation		±3		%	
Output Current Regulation			±10	%	
Ripple and Noise (pk-pk)		0.25		V	20MHz Bandwidth. See note (3)
Ripple Current		<10% of rated output current			*Measured at electronic load LED mode and nominal input voltage
Turn-on Delay Time			3	s	*Measured at 120VAC and at full load

Protection Functions

	Min.	Typ.	Max.	Units	Conditions/Description
Short Circuit Protection					will restart automatically after the fault condition is removed
Over Voltage Protection					will restart automatically after the fault condition is removed
Over Temp Protection (Tc)				°C	will restart automatically after the fault condition is removed

Environmental Conditions

	Min.	Typ.	Max.	Units	Conditions/Description
Operating Temperature (Ta)	-20		60	°C	Non-condensing
Operating Humidity	10		90	%RH	Non-condensing
Operating Case Temperature (Tc)			88	°C	Case temperature measured at the case hot spot Measured at 240Vac, Ta 60°C
Storage Temperature	-40		80	°C	Non-condensing
Storage Humidity	10		95	%RH	Non-condensing
Life Time	Measured at 264Vac, 32,000 hours at Ta 60°C for BPHE010C701.				
Dimensions(L*W*H)	97.5 * 40 * 30.5 mm 3.84 * 1.57 * 1.2 inch				
Weight		138		g	

10W-BPHE Series

Constant Current Mode

EMC Compliance and Safety		
EMC Compliance		
Conducted and Radiated Emission	EN 55015	
Harmonic Current Emissions	EN 61000-3-2	
Voltage Fluctuations & Flicker	EN 61000-3-3	
EMS Standards	Electrostatic Discharge (ESD)	IEC 61000-4-2 8 KV air discharge, 4 KV contact discharge
	RF Electromagnetic Field Susceptibility	IEC 61000-4-3
	Electrical Fast Transient	IEC 61000-4-4
	Surge Immunity	IEC 61000-4-5 L-N 0.5 KV
	Conducted RF Disturbances	IEC 61000-4-6
	Power Frequency Magnetic Field	IEC 61000-4-8
	Voltage Dips	IEC 61000-4-11
Safety		
UL		UL1310
PSE		PSE

Notes

- (1) All parameters not specially mentioned are measured 230VAC input.
- (2) All specifications Typical @25°C , unless otherwise noted, at normal line and load.
- (3) Ripple and Noise measured directly at pins/terminals at nom. load, 0.1uF bypass and 47uF electrolytic, pk-pk @20MHz bandwidth.
- (4) Specified for free-air convection cooling.
- (5) Minimum load is NOT required for proper operation .

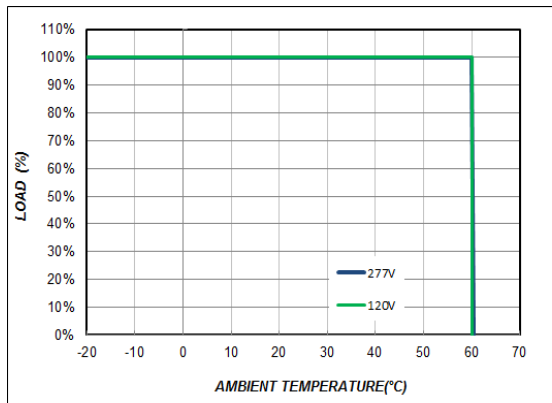
* REFERENCE: www.linkcom.com.tw

* Please contact sales@linkcom.com.tw, sales@linkcomusa.com for more information

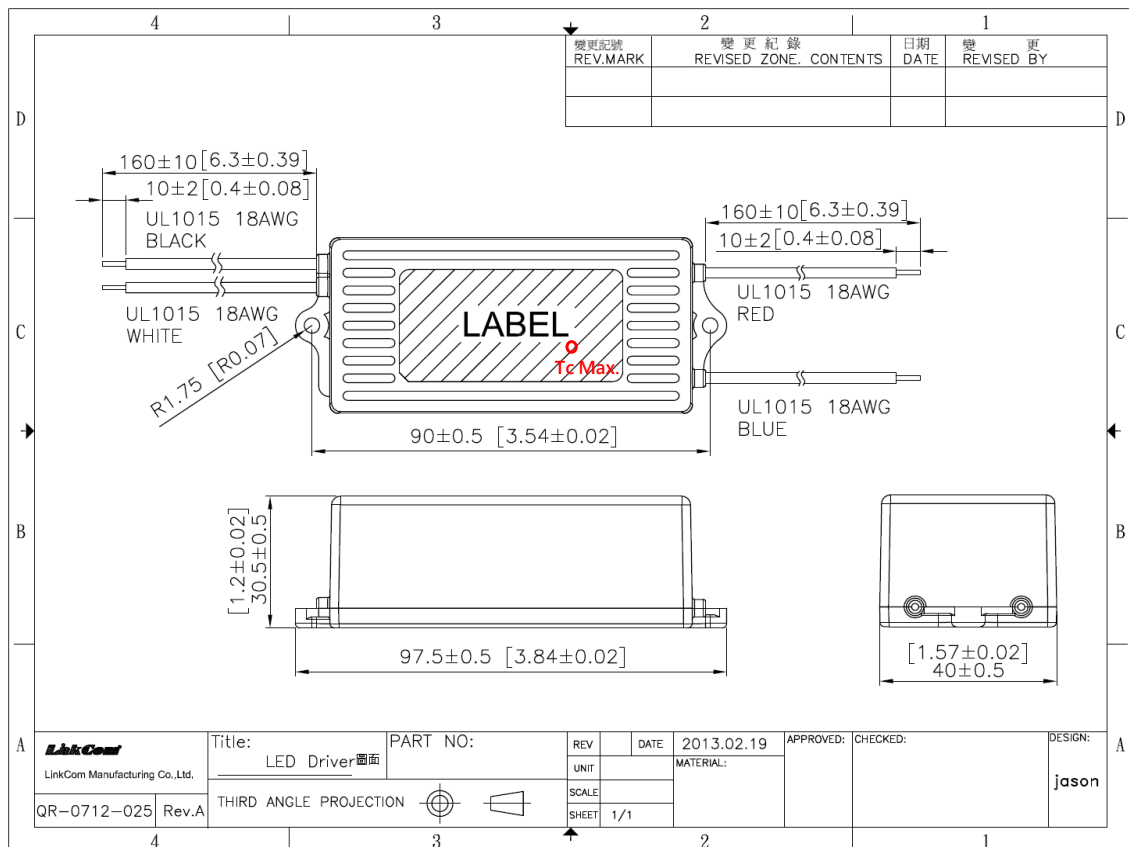
10W-BPHE Series

Constant Current Mode

DERATING CURVE



DIMENSIONS

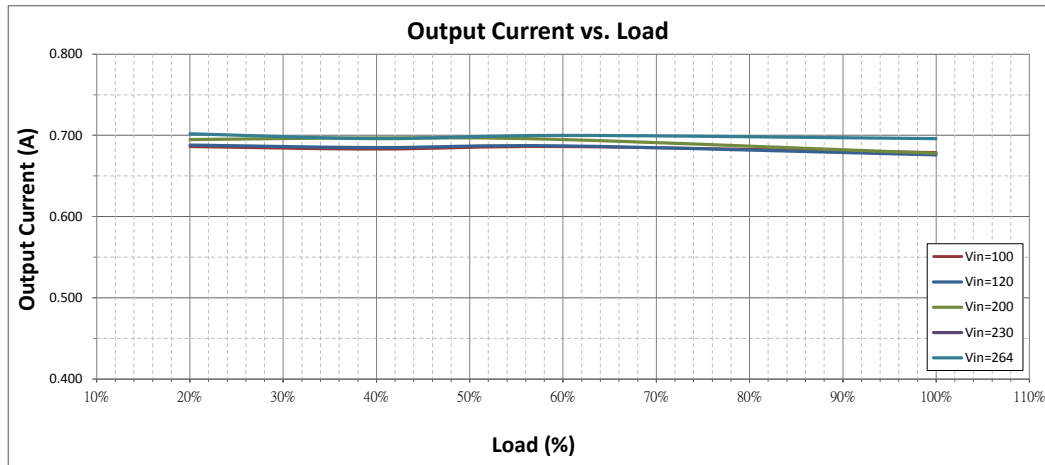


* REFERENCE: www.linkcom.com.tw

10W-BPHE Series

Constant Current Mode

Output Current vs. Load (BPHE010C701)



Efficiency vs. Load (BPHE010C701)

