

TRI Series

TRIAC Dimmable



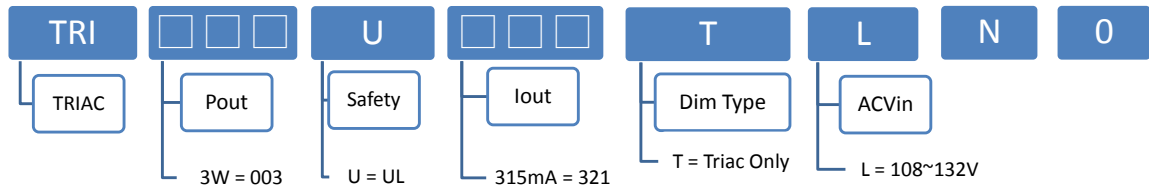
FEATURES:

- Working with Leading Edge(SLV-600P-WH) and Trailing Edge Dimmers
- AC Input 108~132 VAC , TRIAC dimming for 120VAC only.
- Built-in Active PFC Function
- Protection: Line/ SCP / OVP
- High Operating Ambient Temp.: -20°C~+50°C
- Safety: UL 8750
- EMI: FCC Part 15 Class B
- Warranty: 5 years. (refer to warranty policy)
- RoHS Compliant

PRODUCT SPECIFICATION

MODEL	DC OUTPUT POWER (W)	DC OUTPUT VOLTAGE (V)	OUTPUT CURRENT (A)	OUTPUT CURRENT Range	EFFICIENCY (Typ.)		Power Factor (Typ.)	
					120VAC	120VAC	120VAC	120VAC
TRI002U321TLN0	1.89	2.5~6 ⁽⁵⁾	0.315	292~337mA	60.0%		0.9	
TRI003U321TLN0	3.15	5.5~10 ⁽⁵⁾	0.315	292~337mA	60.0%		0.9	

Model Number Code



Input Specifications

	Min.	Typ.	Max.	Units	Conditions/Description
Input Voltage Range	108	120	132	Vac	
Input Frequency Range	57		63	Hz	
Input Current			0.05	A	120VAC in
Inrush Current			5	A	120VAC in, 25°C Cold start
Leakage Current			0.5	mA	120VAC in
Power Factor (PF)	0.9				120VAC, 100% load
Total Harmonics Distortion (THD)			20	%	120VAC, 100% load

Output Specifications

	Min.	Typ.	Max.	Units	Conditions/Description
Line Regulation		±5		%	Without TRIAC
Load Regulation		±5		%	Without TRIAC
Output Current Regulation		±7		%	120VAC in
Ripple and Noise (pk-pk)			2	V	20MHz Bandwidth. See note (3)
Turn-on Delay Time			1	s	*Measured at 120VAC and full load

Protection Functions

	Min.	Typ.	Max.	Units	Conditions/Description
Short Circuit Protection					Auto recovery
Over Voltage Protection				V	Re-power on
LINE Protection			180	Vac	Auto recovery

Environmental Conditions

	Min.	Typ.	Max.	Units	Conditions/Description
Operating Temperature (Ta)	-20		50	°C	Non-condensing
Operating Humidity	10		90	%RH	Non-condensing
Storage Temperature	-40		80	°C	Non-condensing
Storage Humidity	10		95	%RH	Non-condensing

Life Time Measured at 120Vac, 43200 hr at Ta 50°C.

Dimensions(Ø*H)	Ø34* 27.5mm 【Ø1.34* 1.08inch】			
-----------------	----------------------------------	--	--	--

Weight	48			g
--------	----	--	--	---

TRI Series

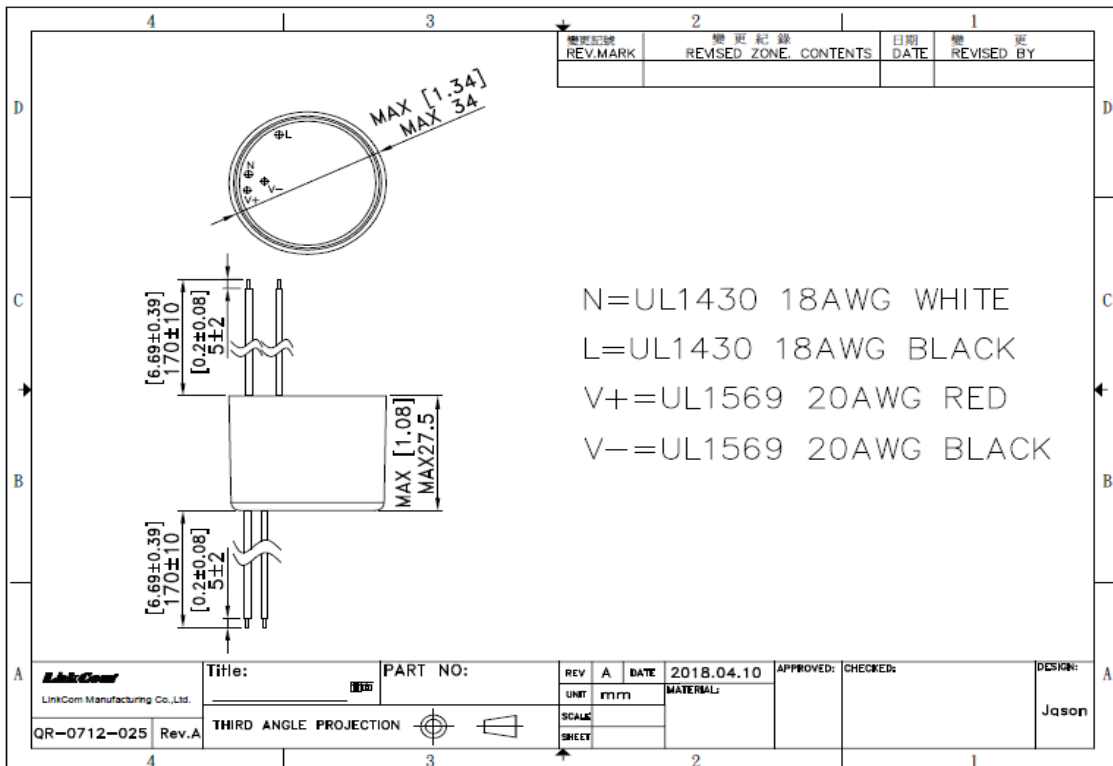
TRIAC Dimmable

EMC Compliance and Safety		
EMC Compliance		
Conducted and Radiated Emission	FCC Part 15 Class B	
Harmonic Current Emissions		N/A
Voltage Fluctuations & Flicker		N/A
EMS Standards	Electrostatic Discharge (ESD)	N/A
	RF Electromagnetic Field Susceptibility	N/A
	Electrical Fast Transient	N/A
	Surge Immunity	N/A
	Conducted RF Disturbances	N/A
	Power Frequency Magnetic Field	N/A
	Voltage Dips	N/A
Safety		
UL	UL 8750, Class 2	

Notes

- (1) All parameters not specially mentioned are measured 120VAC input.
- (2) All specifications Typical @25°C, unless otherwise noted, at normal line and load.
- (3) Ripple and Noise measured directly at pins/terminals at nom. load, 0.1uF bypass and 47uF electrolytic, pk-pk @20MHz bandwidth.
- (4) Specified for free-air convection cooling.
- (5) The DC output voltage range is without TRIAC dimmer.

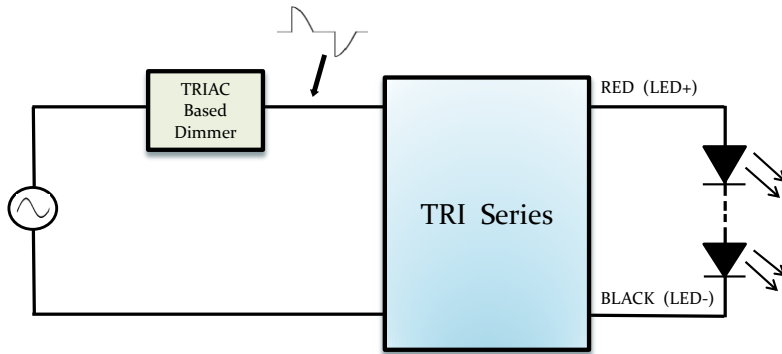
DIMENSIONS



* REFERENCE: www.linkcom.com.tw

TRI Series

AC Dimming Operation

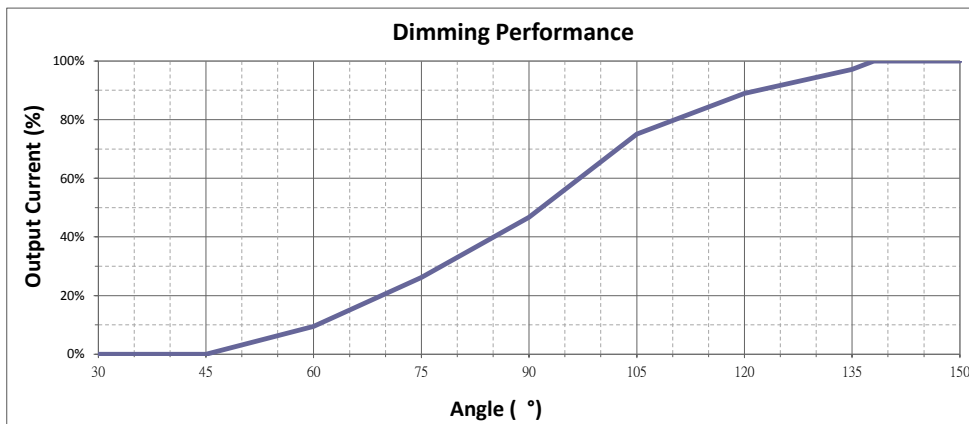


* Must be making sure LED is connected properly before plug-in.

Dimming Test with TRIAC Dimmer Switches

Manufacturer	Model number	
LUTRON	SLV-600P-WH	(120VAC / 60Hz)

Dimming Performance (TRIAC TYPE: LUTRON SLV-600P-WH)



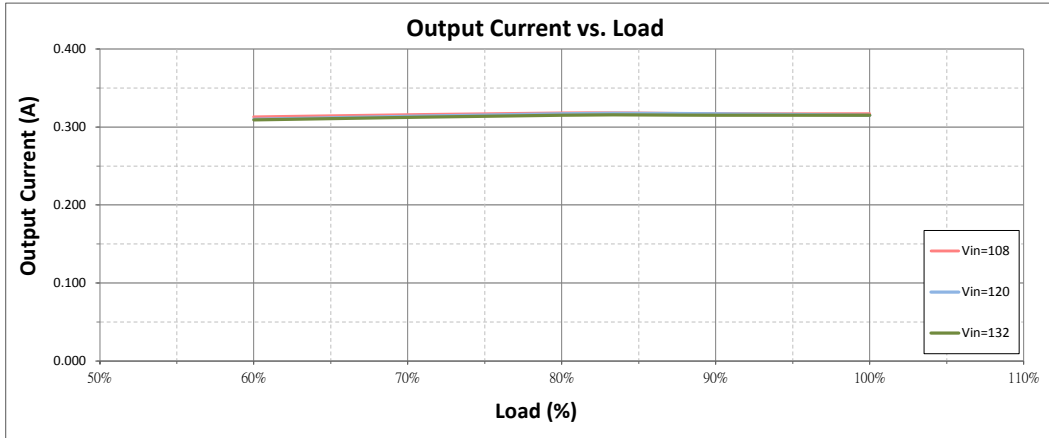
* REFERENCE: www.linkcom.com.tw

* Please contact sales@linkcom.com.tw, sales@linkcomusa.com for more information

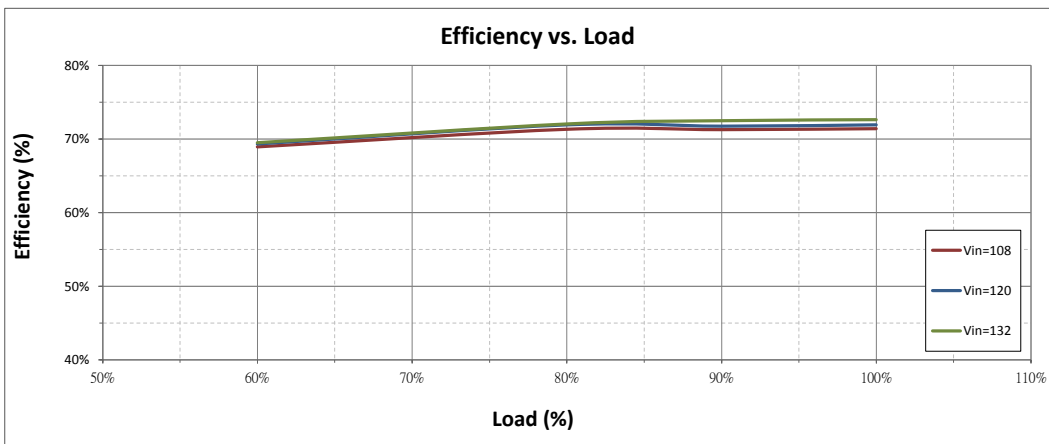
TRI Series

TRIAC Dimmable

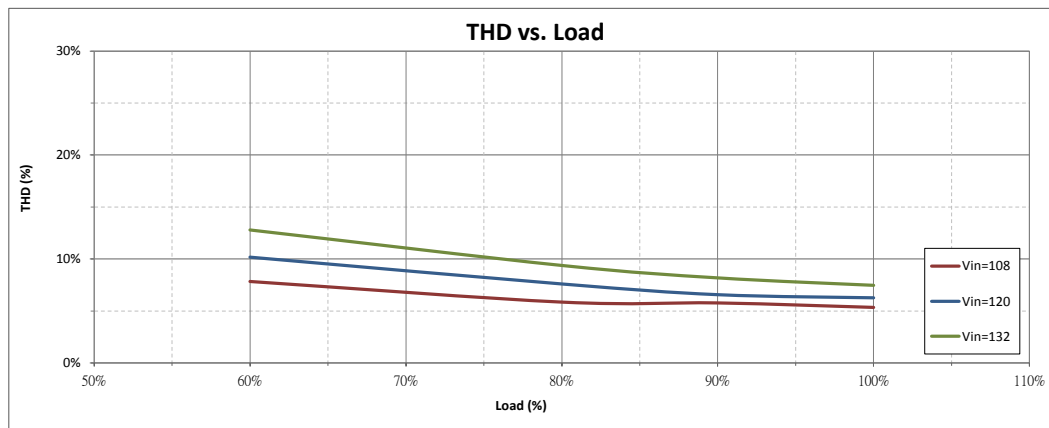
Output Current vs. Load (TRI003U321TLN0 without TRIAC)



Efficiency vs. Load (TRI003U321TLN0 without TRIAC)



THD vs. Load (TRI003U321TLN0 without TRIAC)



TRI Series

TRIAC Dimmable

PF vs. Load (TRI003U321TLN0 without TRIAC)

