

TRI Series

TRIAC Dimmable & 0-10V Dimmable



IP67

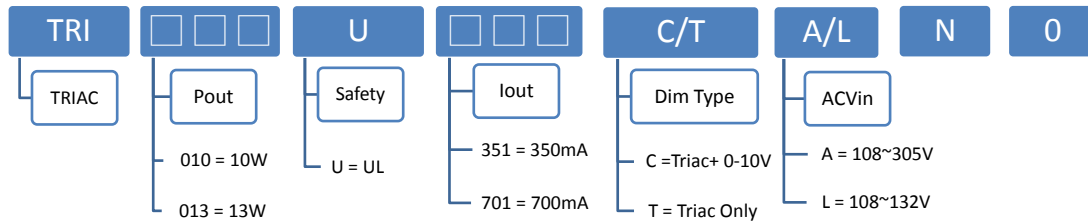
FEATURES:

- Works with Leading Edge and Trailing Edge Dimmers
- AC Input 120~277 VAC
- 0-10V Dimming / Triac dimming for 120VAC only
- Built-in Active PFC Function
- Protection: SCP / OCP
- High Operating Ambient Temp.: -30°C~+50°C
- Surge protection: L-FG/N-FG 1KV
- Safety: UL 8750 , Class P
- EMI: FCC Part 15 Class B
- Warranty: 5 years. (refer to warranty policy)
- RoHS Compliant

PRODUCT SPECIFICATION

MODEL	DC OUTPUT POWER (W)	DC OUTPUT VOLTAGE (V)	OUTPUT CURRENT (A)	OUTPUT CURRENT	EFFICIENCY (Typ.)				Power Factor (Typ.)			
					108VAC	120VAC	200VAC	277VAC	108VAC	120VAC	200VAC	277VAC
TRI013U351CAN0	12.6	18~36	0.35	320~400mA	83.0%	83.0%	84.0%	83.0%	0.98	0.98	0.93	0.9
TRI010U701CAN0	10.5	6~15	0.7	665~750mA	81.0%	82.0%	82.0%	81.0%	0.98	0.98	0.93	0.85
TRI005U351CAN0	5.25	6~15	0.35	320~400mA	80.0%	80.0%	79.0%	75.0%	0.98	0.98	0.9	0.8
TRI009U251CAN0	9	18~36	0.25	235~265mA	81.0%	82.0%	82.0%	80.0%	0.97	0.97	0.92	0.85
TRI005U151CAN0	5.4	26~36	0.15	138~162mA	80.0%	80.0%	78.0%	73.0%	0.95	0.95	0.9	0.8
TRI013U351TAN0	12.6	18~36	0.35	320~400mA	83.0%	83.0%	84.0%	83.0%	0.98	0.98	0.93	0.9
TRI010U701TAN0	10.5	6~15	0.7	665~750mA	82.0%	82.0%	82.0%	82.0%	0.98	0.98	0.93	0.85
TRI005U351TAN0	5.25	6~15	0.35	320~400mA	81.0%	81.0%	80.0%	77.0%	0.98	0.98	0.9	0.8
TRI009U251TAN0	9	18~36	0.25	235~265mA	81.0%	82.0%	82.0%	80.0%	0.97	0.97	0.92	0.85
TRI005U151TAN0	5.4	26~36	0.15	138~162mA	80.0%	80.0%	78.0%	73.0%	0.95	0.95	0.9	0.8

Model Number Code



Input Specifications

	Min.	Typ.	Max.	Units	Conditions/Description
Input Voltage Range	108		305	Vac	
Input Frequency Range	57		63	Hz	
Input Current			0.25	A	120VAC in
Inrush Current			10	A	120VAC in, 25°C Cold start
Leakage Current			0.5	mA	120VAC in
Power Factor (PF)	0.9				
Total Harmonics Distortion (THD)			10	%	108-132VAC, 100% load

Output Specifications

	Min.	Typ.	Max.	Units	Conditions/Description
Line Regulation		±3		%	108~132Vac
Load Regulation				%	
Output Current Regulation	-5		5	%	at Full load & 120VAC
Ripple and Noise (pk-pk)			2	V	20MHz Bandwidth. See note (3)
Turn-on Delay Time			1	s	*Measured at 108-132VAC and at full load

Protection Functions

	Min.	Typ.	Max.	Units	Conditions/Description
Short Circuit Protection					Auto recovery
Open Circuit Protection (Output)			50	Vdc	Auto recovery (TRI013U351CAN0)

Environmental Conditions

	Min.	Typ.	Max.	Units	Conditions/Description
Operating Temperature (Ta)	-30		50	°C	Non-condensing
Operating Humidity	10		90	%RH	Non-condensing
Operating Case Temperature (Tc)			75	°C	Case temperature measured at the case hot spot Measured at 120Vac, Ta 50°C
Storage Temperature	-40		80	°C	Non-condensing
Storage Humidity	10		95	%RH	Non-condensing

Life Time	Measured at 120Vac, 45,000 hours at Tc 50°C.				
Dimensions(L*W*H)	93.1*39.5*25 mm 【3.67 * 1.56 * 0.98 inch】				
Weight		202		g	

TRI Series

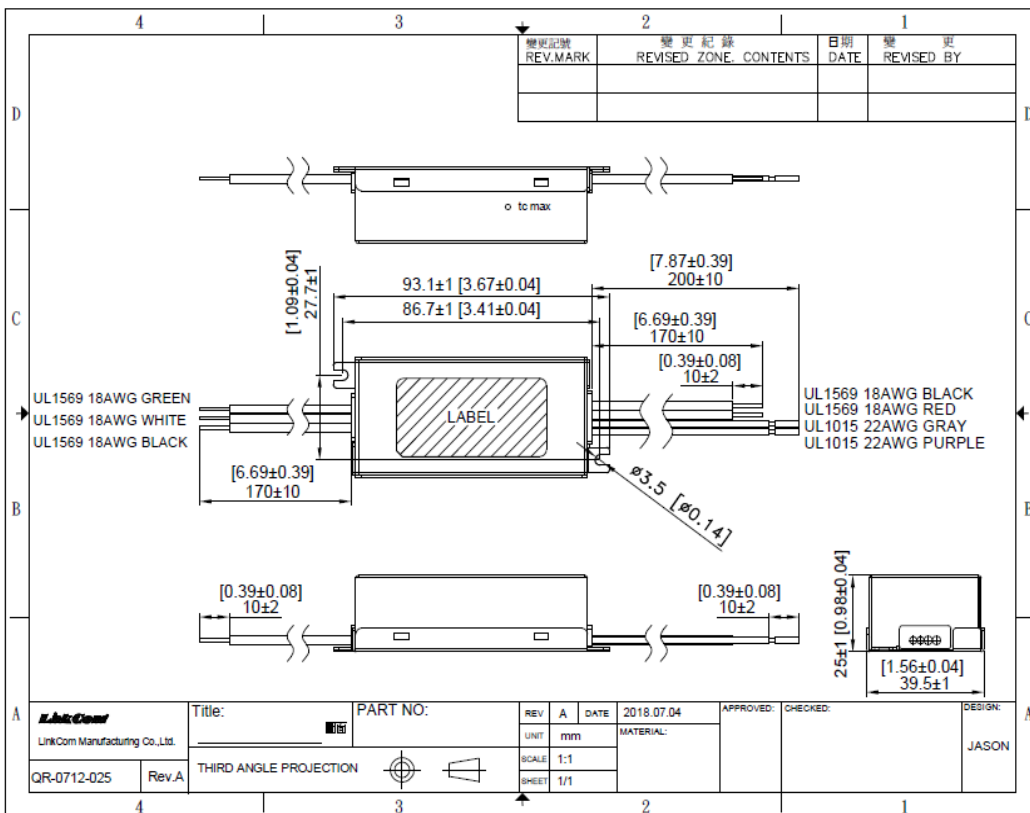
TRI/AC Dimmable & 0-10V Dimmable

EMC Compliance and Safety		EMC Compliance	
Conducted and Radiated Emission		FCC Part 15 Class B	
Harmonic Current Emissions			
Voltage Fluctuations & Flicker			
EMS Standards	Electrostatic Discharge (ESD)		
	RF Electromagnetic Field Susceptibility		
	Electrical Fast Transient		
	Surge Immunity		L-FG/N-FG 1KV
	Conducted RF Disturbances		
	Power Frequency Magnetic Field		
	Voltage Dips		
Safety			
UL		UL 8750 , Class P	

Notes

- (1) All parameters not specially mentioned are measured 120VAC input.
- (2) All specifications Typical @25°C, unless otherwise noted, at normal line and load.
- (3) Ripple and Noise measured directly at pins/terminals at nom. load, 0.1uF bypass and 47uF electrolytic, pk-pk @20MHz bandwidth.
- (4) Specified for free-air convection cooling.

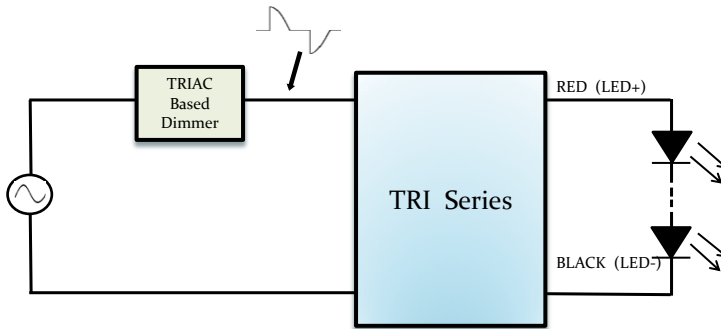
DIMENSIONS



* REFERENCE: www.linkcom.com.tw
 * Please contact sales@linkcom.com.tw, sales@linkcomusa.com for more information

TRI Series

AC Dimming Operation

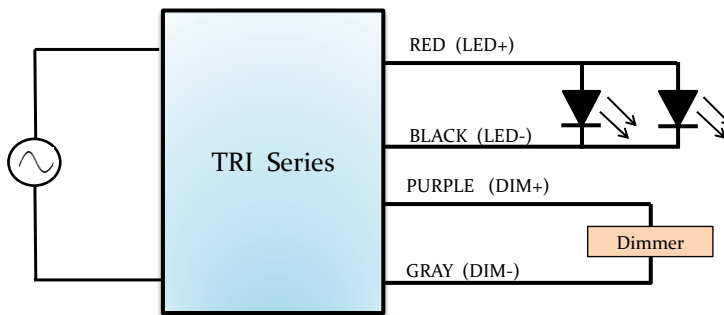


Dimming Test with TRIAC Dimmer Switches

Manufacturer	Model number	
LUTRON	SLV-600P-WH	(120VAC / 60Hz)
LUTRON	DV-603P-WH	(120VAC / 60Hz)

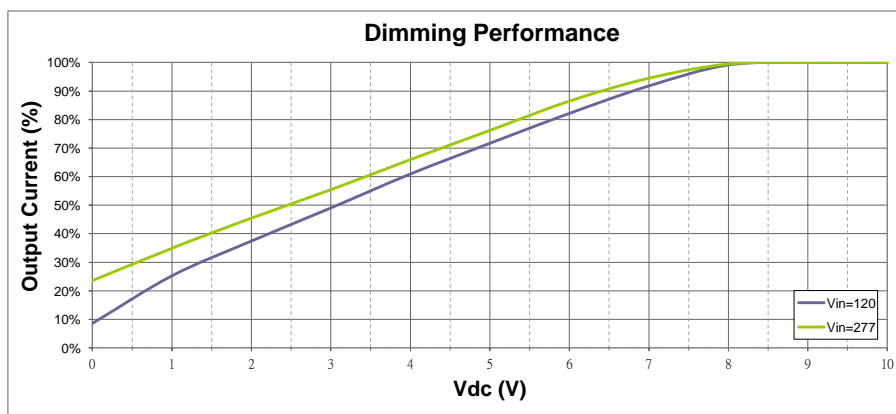
*Please make sure LED is connected properly before plug-in.

0-10V Dimming Operation



Parameters	Minimum	Typical	Maximum
Absolute maximum voltage on the 0-10(+) Purple Wire	0V	—	10V
Source current on the 0-10V(+) Purple Wire	0mA	—	1mA

0-10V Dimming curve (reference)



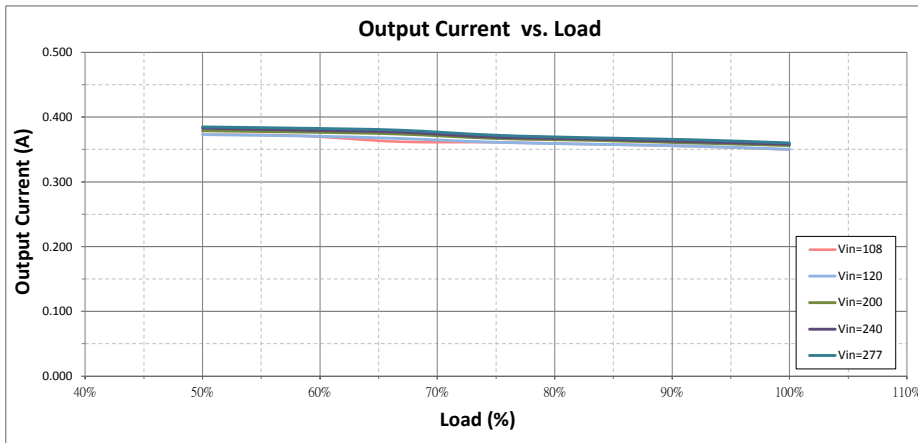
0-10V Dimmer test

Manufacturer	Model Number	
LEVITON	IP-710	0-10V Dimming

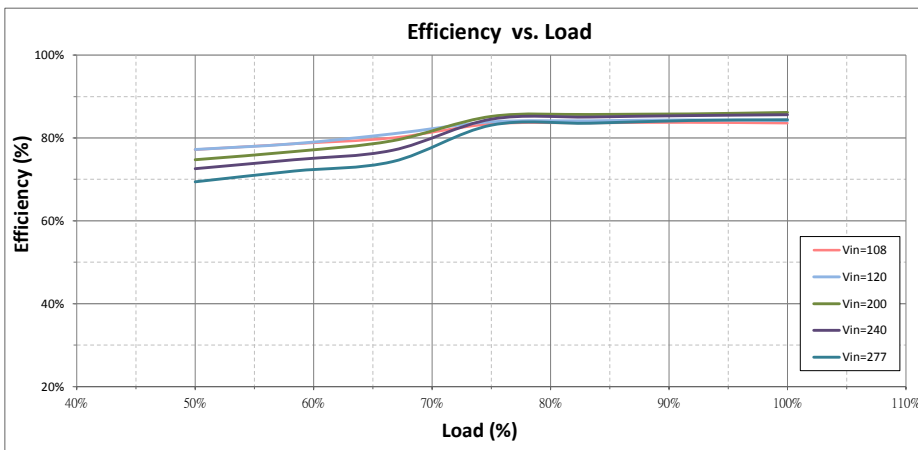
TRI Series

TRIAC Dimmable & 0-10V Dimmable

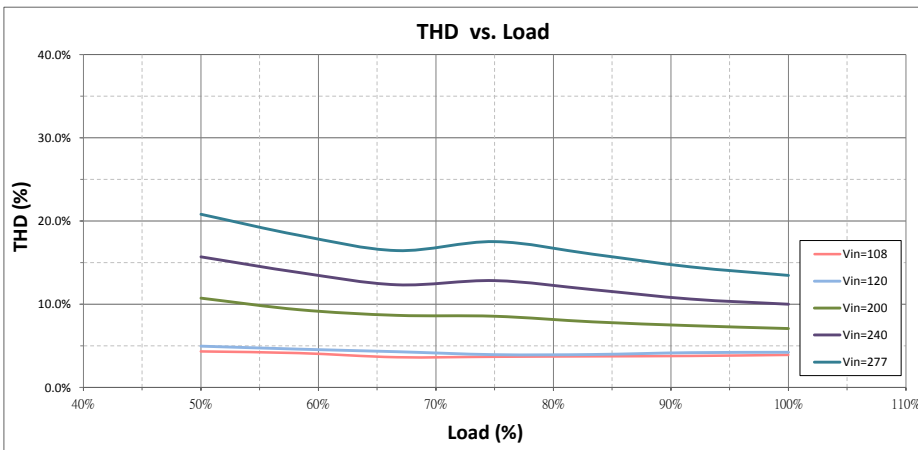
Output Current vs. Load (TRI013U351CAN0)



Efficiency vs. Load (TRI013U351CAN0)



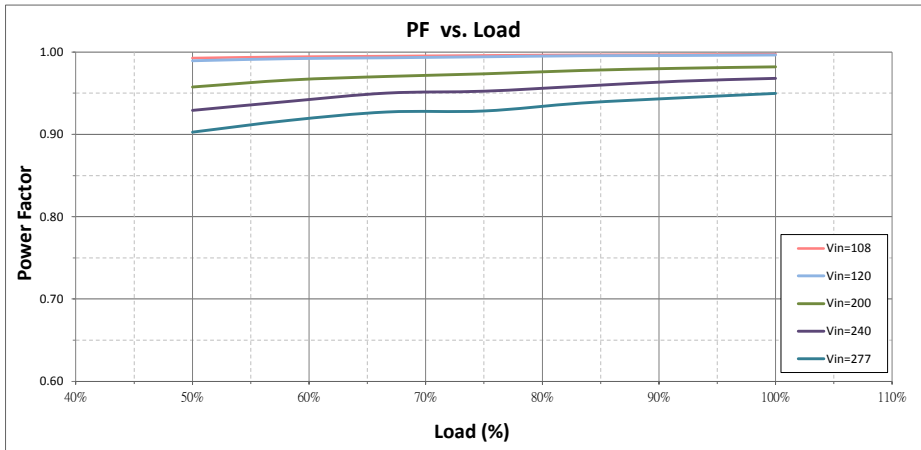
THD vs. Load (TRI013U351CAN0)



TRI Series

TRIAC Dimmable & 0-10V Dimmable

PF vs. Load (TRI013U351CAN0)



TRIAC Dimming Performance (TRI013U351CAN0)

