

TRI Series



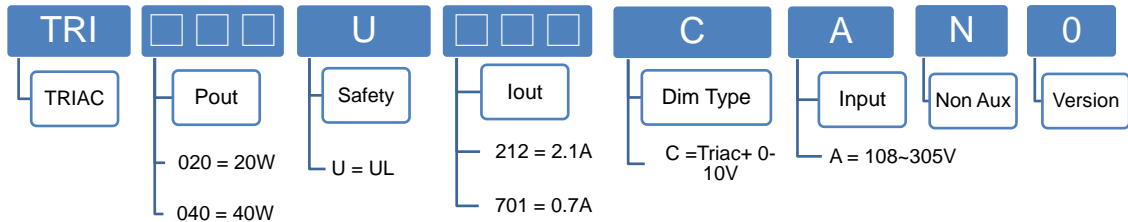
FEATURES:

- AC Input 120~277 VAC
- 0-10V Dimming for 120~277VAC / TRIAC dimming for 120VAC only
- TRIAC Dimming with Leading Edge and Trailing Edge
- Built-in Active PFC Function
- Protection: SCP / OCP / OVP
- TRIAC Dimming: Io range 100 ~ 5% / Phase Angle > 152 degrees Dim to off
- 0~10V Dimming: Io range 100 ~ 3%
- Flicker free comply with California Title 24
- High Operating Ambient Temp.: -30°C~+50°C
- Surge protection: L-N 1KV ; L-FG/N-FG 2KV
- Safety: Comply with UL 8750 , Class P
- EMI: Comply with FCC Part 15 Class B
- Warranty: 5 years. (refer to warranty policy)
- Waterproof: IP67
- RoHS Compliant

PRODUCT SPECIFICATION

MODEL	DC OUTPUT POWER (W)	DC OUTPUT VOLTAGE (V)	OUTPUT CURRENT (A)	OUTPUT CURRENT TOLERANCE	EFFICIENCY (Typ.)				Power Factor (Typ.)			
					108VAC	120VAC	230VAC	277VAC	108VAC	120VAC	230VAC	277VAC
TRI030U212CAN0	31.5	9~15	2.1	5%	81.0%	82.0%	83.0%	82.0%	0.97	0.97	0.93	0.93
TRI040U142CAN0	39.2	18~28	1.4	5%	82.0%	82.5%	84.0%	84.0%	0.97	0.97	0.93	0.93
TRI040U112CAN0	37.8	24~36	1.05	5%	83.0%	83.5%	84.0%	84.0%	0.97	0.97	0.93	0.93
TRI040U901CAN0	37.8	28~42	0.9	5%	83.0%	83.5%	84.0%	84.0%	0.97	0.97	0.93	0.93
TRI040U701CAN0	39.2	40~56	0.7	5%	84.0%	84.0%	84.0%	84.0%	0.97	0.97	0.93	0.93

Model Number Code



Input Specifications

	Min.	Typ.	Max.	Units	Conditions/Description
Input Voltage Range	108		305	Vac	
Input Frequency Range	57		63	Hz	
Input Current			0.45	A	120VAC in
Inrush Current			20	A	120VAC in, 25°C Cold start
Leakage Current			0.5	mA	120VAC in
Power Factor (PF)	0.93				
Total Harmonics Distortion (THD)			20	%	120/277 VAC, 100% load

Output Specifications

	Min.	Typ.	Max.	Units	Conditions/Description
Line Regulation		±3		%	108~132Vac
Load Regulation		±5		%	at Full load & 120VAC
Output Current Regulation	-5		5	%	at Full load & 120VAC
Ripple and Noise (pk-pk)			4	V	20MHz Bandwidth. See note (3)
Turn-on Delay Time			1	s	*Measured at 108-132VAC and at full load

Protection Functions

	Min.	Typ.	Max.	Units	Conditions/Description
Short Circuit Protection					Auto recovery
Open Circuit Protection (Output)			70	Vdc	Auto recovery (TRI040U701CAN0)

Environmental Conditions

	Min.	Typ.	Max.	Units	Conditions/Description
Operating Temperature (Ta)	-30		50	°C	Non-condensing
Operating Humidity	10		90	%RH	Non-condensing
Operating Case Temperature (Tc)			90	°C	Case temperature measured at the case hot spot Measured at 120Vac, Ta 50°C
Storage Temperature	-40		80	°C	Non-condensing
Storage Humidity	10		95	%RH	Non-condensing
Life Time	Measured at 120Vac, 45,000 hours at Tc 75°C.				
Dimensions(L*W*H)	90.2*85.9*24.4 mm [3.55 * 3.38 * 0.96 inch]				
Weight		345		g	

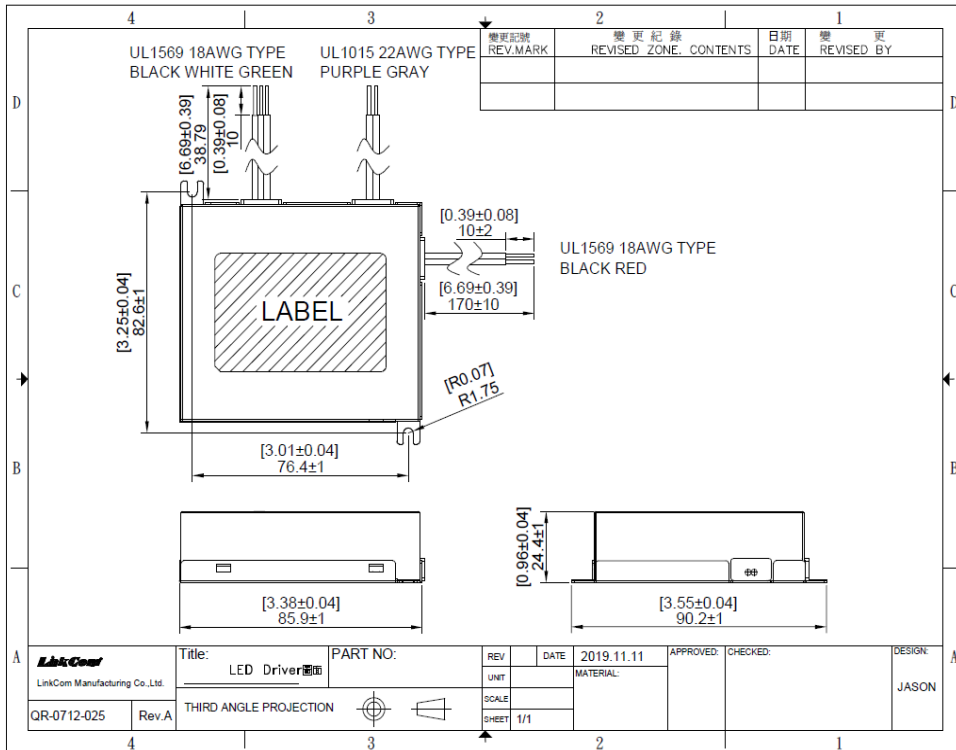
TRI Series

EMC Compliance and Safety		EMC Compliance	
Conducted and Radiated Emission		Meet FCC Part 15 Class B	
Harmonic Current Emissions			
Voltage Fluctuations & Flicker			
EMS Standards	Electrostatic Discharge (ESD)		
	RF Electromagnetic Field Susceptibility		
	Electrical Fast Transient		
	Surge Immunity		L-N 1KV ; L-FG/N-FG 2KV
	Conducted RF Disturbances		
	Power Frequency Magnetic Field		
	Voltage Dips		
Safety			
UL	Meet UL 8750 , Class P		

Notes

- (1) All parameters not specially mentioned are measured 120VAC input & full load.
- (2) All specifications Typical @25°C, unless otherwise noted, at normal line and load.
- (3) Ripple and Noise measured directly at pins/terminals at nom. load, 0.1uF bypass and 47uF electrolytic, pk-pk @20MHz bandwidth.
- (4) Specified for free-air convection cooling.
- (5) specification V1.0 20191203

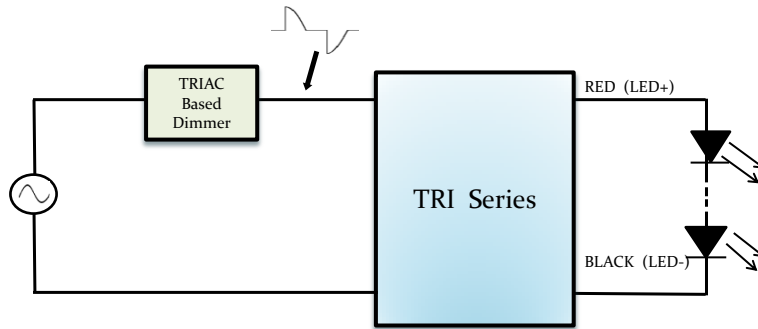
DIMENSIONS



* REFERENCE: www.linkcom.com.tw
 * Please contact sales@linkcom.com.tw, sales@linkcomusa.com for more information

TRI Series

AC TRIAC Dimming Wiring Diagram

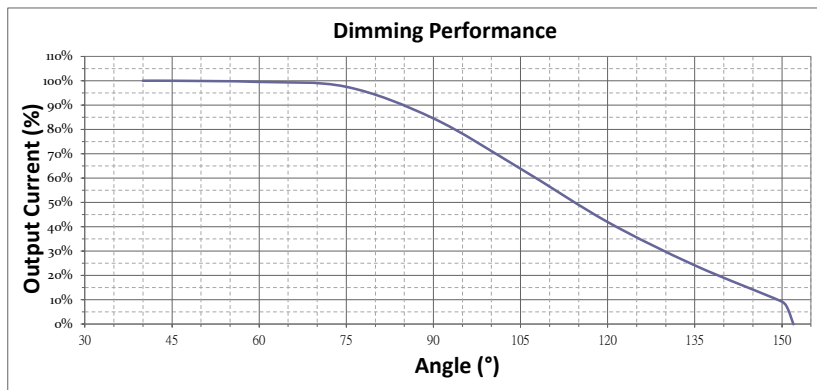


TRIAC Dimmer Compatibility

Manufacturer	Model number
Lutron	S-600P
Lutron	S-603P

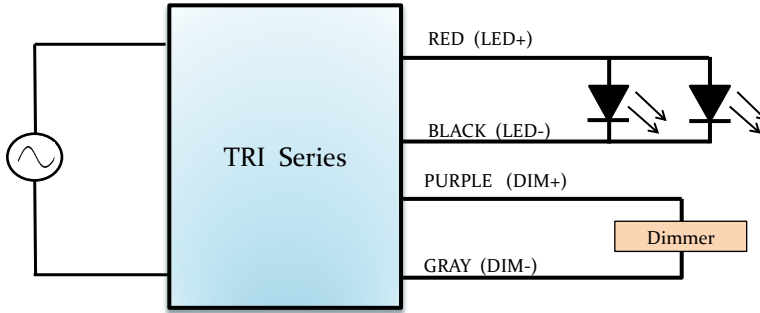
* Please make sure LED is connected properly before plug-in.

TRIAC Dimming Curve (TRI030U212CAN0)



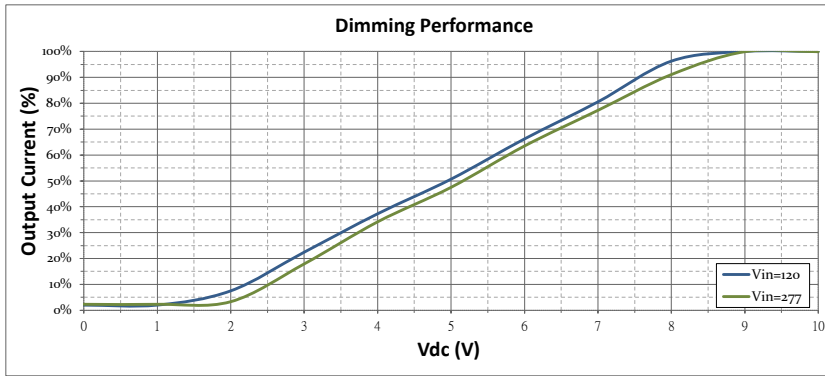
TRI Series

0~10V Dimming Wiring Diagram



Parameters	Minimum	Typical	Maximum
Absolute maximum voltage on the 0-10V(+) Purple Wire	0V	—	10V
Source current on the 0-10V(+) Purple Wire	0mA	—	1mA

0~10V Dimming curve (TRI030U212CAN0)



0~10V Dimmer Compatibility

Dimmer Type	Brand	Part Number
0~10V Dimming	Leviton	IP-710
	Lutron	NTSTV-DV
	Wattstopper	ADF-120277-W