

**DTW Series**



**FEATURES:**

- AC Input 100~277VAC
- Built-in Active PFC Function
- Protection: SCP / OVP / OTP
- Optional Auxiliary Output 3.3V or 5V (BLE models not applicable)
- Built-in Dim to Warm / Brt. Adj / BLE (BLE models only)
- 0-10V or BLE Dimming Control / Dim-to-off
- High Operating Ambient Temp.: 0°C~+50°C
- Surge protection: L-N 1KV
- Safety: UL 8750
- EMI: FCC Part 15 Class B / CE
- Comply with Indoor
- Warranty: 3 years (refer to warranty policy)
- RoHS Compliant

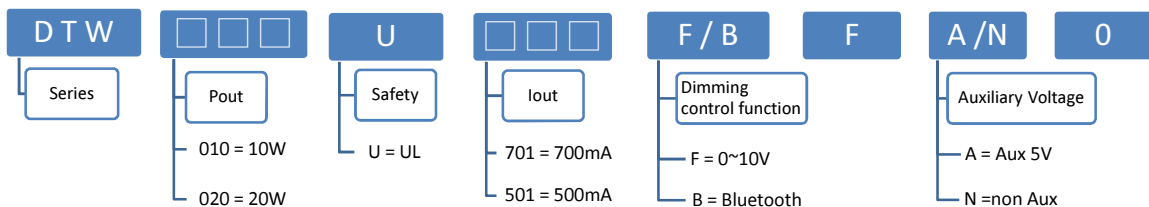
**0-10V Dimming Control Models**

MODEL	DC OUTPUT POWER (W)	DC OUTPUT VOLTAGE (V)	OUTPUT CURRENT (A)	OUTPUT CURRENT TOLERANCE	EFFICIENCY (Typ.)				Power Factor (Typ.)			
					100VAC	120VAC	200VAC	277VAC	100VAC	120VAC	200VAC	277VAC
					DTW010U351FFA0	10.5	21-30	0.35	±13%	82.0%	82.0%	83.0%
DTW025U751FFA0	22.5	21-30	0.75	±10%	83.0%	83.0%	84.0%	84.0%	0.99	0.98	0.96	0.92
DTW030U102FFA0	30	21-30	1	±10%	83.0%	83.0%	84.0%	84.0%	0.99	0.98	0.96	0.92
DTW013U351FFA0	12.6	21-36	0.35	±13%	82.0%	82.0%	83.0%	83.0%	0.99	0.98	0.95	0.91
DTW015U501FFA0	18	21-36	0.5	±10%	83.0%	83.0%	84.0%	84.0%	0.99	0.98	0.96	0.92
DTW025U701FFA0	25.2	21-36	0.7	±10%	83.0%	83.0%	84.0%	84.0%	0.99	0.98	0.96	0.92
DTW015U351FFA0	14.7	21-42	0.35	±13%	82.0%	82.0%	83.0%	83.0%	0.99	0.98	0.95	0.91
DTW020U501FFA0	21	21-42	0.5	±10%	83.0%	83.0%	84.0%	84.0%	0.99	0.98	0.96	0.92
DTW030U701FFA0	29.4	21-42	0.7	±10%	83.0%	83.0%	84.0%	84.0%	0.99	0.98	0.96	0.92
DTW010U201FFA0	11.2	28-56	0.2	±13%	82.0%	82.0%	83.0%	83.0%	0.99	0.98	0.95	0.91
DTW020U301FFA0	16.8	28-56	0.3	±13%	83.0%	83.0%	84.0%	84.0%	0.99	0.98	0.96	0.92
DTW030U501FFA0	28	28-56	0.5	±10%	83.0%	83.0%	84.0%	84.0%	0.99	0.98	0.96	0.92

**BLE Dimming Control Models**

MODEL	DC OUTPUT POWER (W)	DC OUTPUT VOLTAGE (V)	OUTPUT CURRENT (A)	OUTPUT CURRENT TOLERANCE	EFFICIENCY (Typ.)				Power Factor (Typ.)			
					100VAC	120VAC	200VAC	277VAC	100VAC	120VAC	200VAC	277VAC
					DTW010U351BFN0	10.5	21-30	0.35	±13%	81.0%	81.0%	82.0%
DTW025U751BFN0	22.5	21-30	0.75	±10%	82.0%	82.0%	83.0%	83.0%	0.99	0.98	0.96	0.92
DTW030U102BFN0	30	21-30	1	±10%	82.0%	82.0%	83.0%	83.0%	0.99	0.98	0.96	0.92
DTW013U351BFN0	12.6	21-36	0.35	±13%	81.0%	81.0%	82.0%	82.0%	0.99	0.98	0.95	0.91
DTW015U501BFN0	18	21-36	0.5	±10%	82.0%	82.0%	83.0%	83.0%	0.99	0.98	0.96	0.92
DTW025U701BFN0	25.2	21-36	0.7	±10%	82.0%	82.0%	83.0%	83.0%	0.99	0.98	0.96	0.92
DTW015U351BFN0	14.7	21-42	0.35	±13%	81.0%	81.0%	82.0%	82.0%	0.99	0.98	0.95	0.91
DTW020U501BFN0	21	21-42	0.5	±10%	82.0%	82.0%	83.0%	83.0%	0.99	0.98	0.96	0.92
DTW030U701BFN0	29.4	21-42	0.7	±10%	82.0%	82.0%	83.0%	83.0%	0.99	0.98	0.96	0.92
DTW010U201BFN0	11.2	28-56	0.2	±13%	81.0%	81.0%	82.0%	82.0%	0.99	0.98	0.95	0.91
DTW020U301BFN0	16.8	28-56	0.3	±13%	82.0%	82.0%	83.0%	83.0%	0.99	0.98	0.96	0.92
DTW030U501BFN0	28	28-56	0.5	±10%	82.0%	82.0%	83.0%	83.0%	0.99	0.98	0.96	0.92

**Model Number Code**



**Input Specifications**

	Min.	Typ.	Max.	Units	Conditions/Description
Input Voltage Range	90		305	Vac	
Input Frequency Range	47		63	Hz	
Input Current			0.39	A	100VAC in
Inrush Current			10	A	230VAC in, 25°C Cold start
Leakage Current			0.75	mA	277VAC in
Power Factor (PF)	0.9				
Total Harmonics Distortion (THD)			20	%	100-277VAC, 100% load

## DTW Series

Output Specifications					
	Min.	Typ.	Max.	Units	Conditions/Description
Line Regulation		±3		%	
Load Regulation		±3		%	
Output Current Regulation			±13	%	
Ripple and Noise (pk-pk)		2		V	20MHz Bandwidth. See note (3)
Ripple Current	<30% of rated output current				*Measured at electronic load LED mode and nominal input voltage with DC10V dimming.
Turn-on Delay Time			1	s	Measured at 100-277VAC and at full load
Auxiliary Output Voltage		5		V	± 10% Tolerance (Available for customization)
Auxiliary Output Source Current	0		0.03	A	
Protection Functions					
	Min.	Typ.	Max.	Units	Conditions/Description
Short Circuit Protection					will restart automatically after the fault condition is removed
Over Voltage Protection					will restart automatically after the fault condition is removed
Over Temp Protection (Tc)				°C	will restart automatically after the fault condition is removed
Environmental Conditions					
	Min.	Typ.	Max.	Units	Conditions/Description
Operating Temperature (Ta)	0		50	°C	Non-condensing
Operating Humidity	10		90	%RH	Non-condensing
Operating Case Temperature (Tc)			75	°C	Case temperature measured at the case hot spot
Storage Temperature	-20		80	°C	Non-condensing
Storage Humidity	10		95	%RH	Non-condensing
Life Time	Measured at 277Vac, 56,000 hours at Ta 50°C for DTW030U112FFA0.				
Dimensions(L*W*H)	95 * 69 * 29 mm 3.74 * 2.72 * 1.14 inch				
Weight		110		g	
EMC Compliance and Safety					
EMC Compliance					
Conducted and Radiated Emission		Comply with EN 55015 (CISPR15)			
Harmonic Current Emissions		Comply with EN 61000-3-2			
Voltage Fluctuations & Flicker		Comply with EN 61000-3-3			
EMS Standards	Electrostatic Discharge (ESD)	Comply with IEC 61000-4-2		8 KV air discharge, 4 KV contact discharge	
	RF Electromagnetic Field Susceptibility	Comply with IEC 61000-4-3			
	Electrical Fast Transient	Comply with IEC 61000-4-4			
	Surge Immunity	Comply with IEC 61000-4-5		L-N 1KV	
	Conducted RF Disturbances	Comply with IEC 61000-4-6			
	Power Frequency Magnetic Field	Comply with IEC 61000-4-8			
	Voltage Dips	Comply with IEC 61000-4-11			
Safety					
UL	Comply with UL 8750				

## Notes

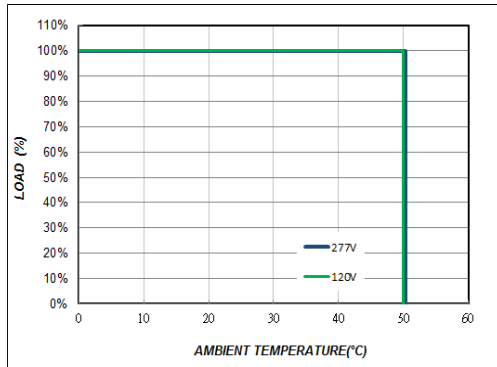
- (1) All parameters not specially mentioned are measured 230VAC input.  
 (2) All specifications Typical @25°C, unless otherwise noted, at normal line and load.  
 (3) Ripple and Noise measured directly at pins/terminals at nom. load, 0.1uF bypass and 47uF electrolytic, pk-pk @20MHz bandwidth.  
 (4) Specified for free-air convection cooling.

\* REFERENCE: [www.linkcom.com.tw](http://www.linkcom.com.tw)

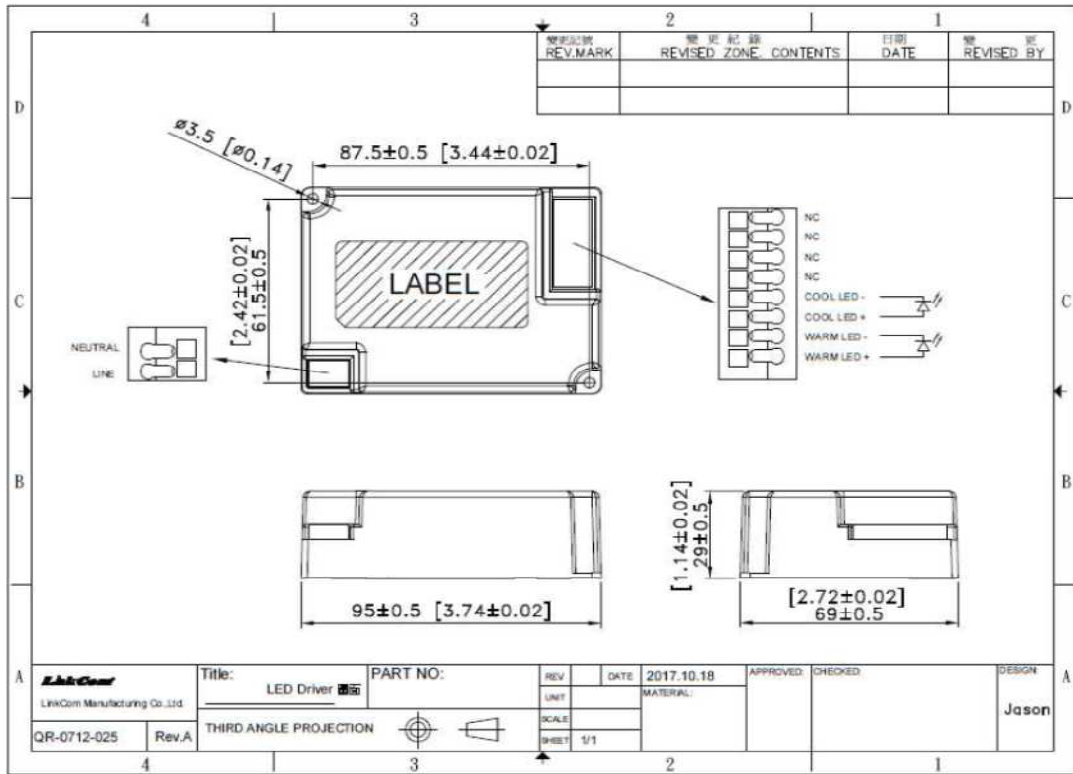
\* Please contact [sales@linkcom.com.tw](mailto:sales@linkcom.com.tw), [sales@linkcomusa.com](mailto:sales@linkcomusa.com) for more information

**DTW Series**

**DERATING CURVE**



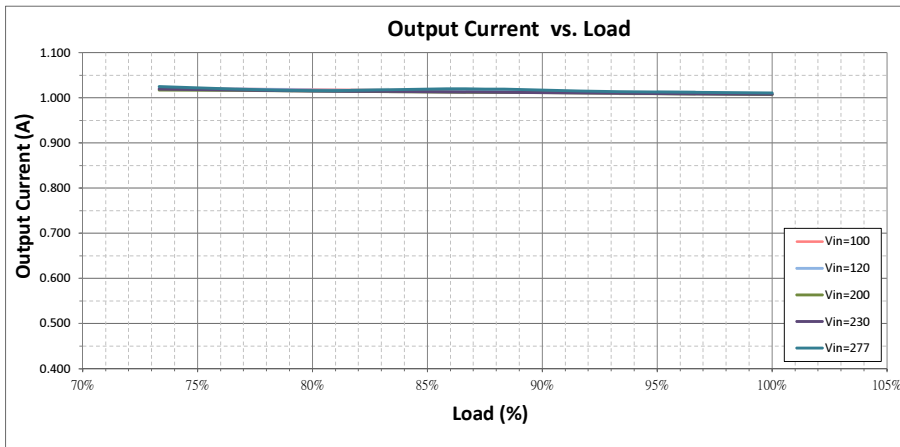
**DIMENSIONS (0-10V Dimming Control Models)**



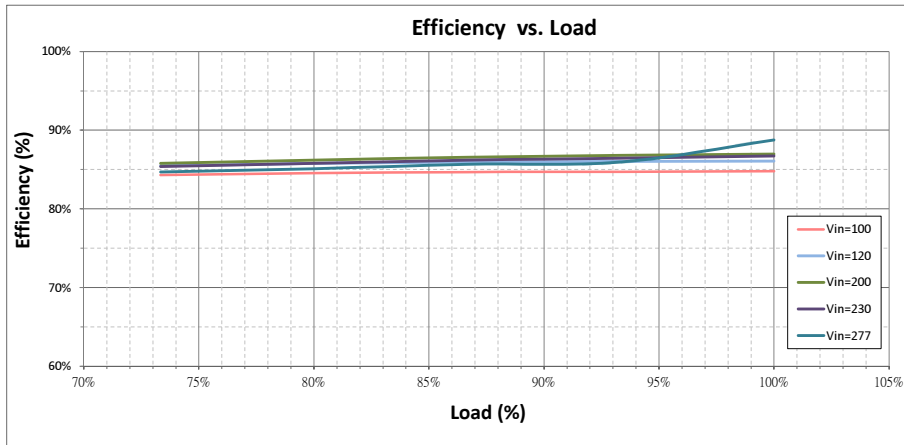
\* REFERENCE: [www.linkcom.com.tw](http://www.linkcom.com.tw)

**DTW Series**

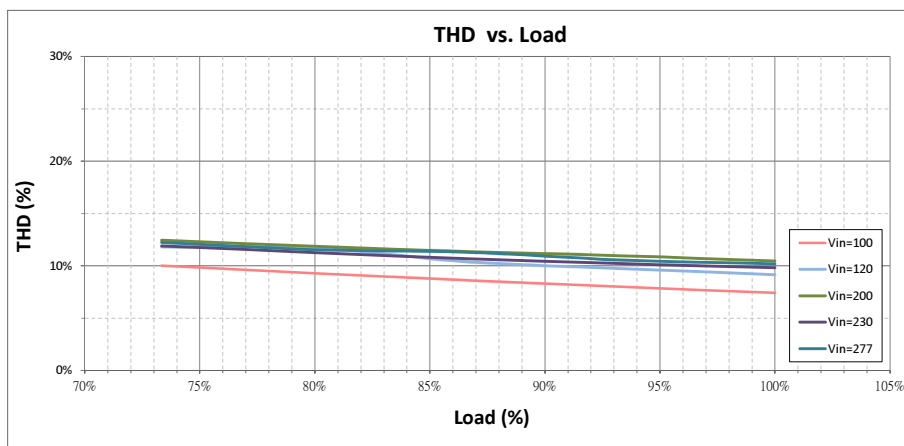
**Output Current vs. Load (DTW030U102FFA0)**



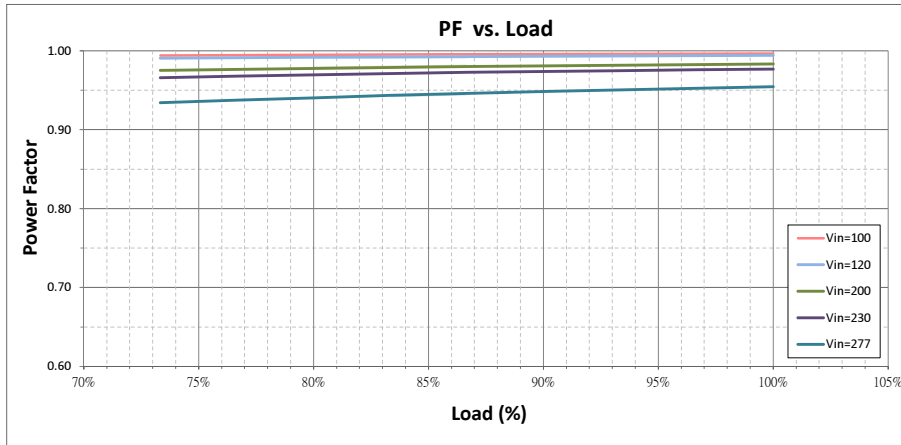
**Efficiency vs. Load (DTW030U102FFA0)**



**THD vs. Load (DTW030U102FFA0)**

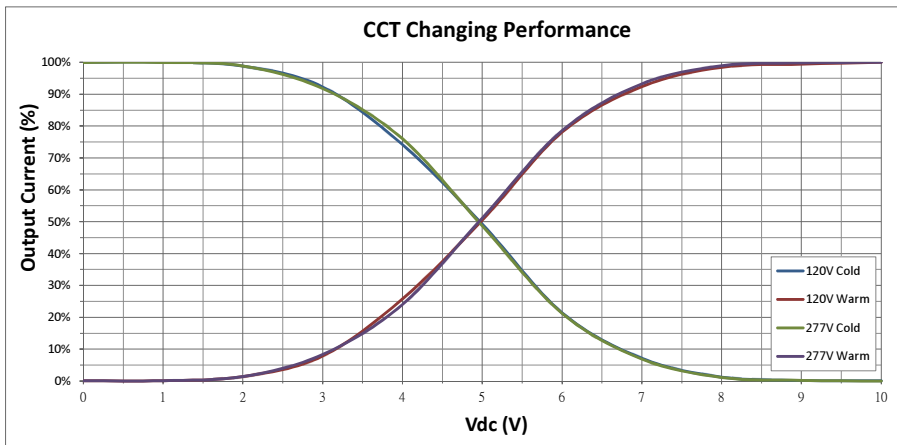


**DTW Series**  
**PF vs. Load (DTW030U102FFA0)**



**Dimming Performance (DTW030U102FFA0)**

**Brightness DC 10V, CCT DC 0V~10V (CCT adjustment)**



**CCT DC 0V/10V Dim DC 0V~10V (brightness adjustment)**

