

CLB Series



PRODUCT HIGHLIGHT:

- DC Input 12~50 V
- Output: 1/2/3/4/5 channels BLE Mesh controller
- Output Current 5A Max.
- Maximum Load: 250W per Channel
- Wireless dimming Range 1-100% via INCORE APP
- 1-channel output for Dim to warm or Brightness control
- 2-channel output for Tunable White color temperature control
- 3-channel output for RGB color tuning
- 4-channel output for RGBC or RGBW color tuning
- 5-channel output for RGBCW full color tuning
- Operating Ambient Temp.: -20°C~+50°C
- Warranty: 2 years (refer to warranty policy)
- Compatible with Constant Voltage LED Power Supply

BLE MESH FEATURES:

- Auto pairing
- Transmission Range: 120m (in 4 jumps)
- RF Communication Type: 2.4 GHz
- High Speed Communication: <100ms
- Support iBeacon
- Multiple Host
- CCT memories, Time Schedule, Group Setup, Sunrise to Sunset
- Remote Control and Wall Switch Accessory Available

INCORE APP Download



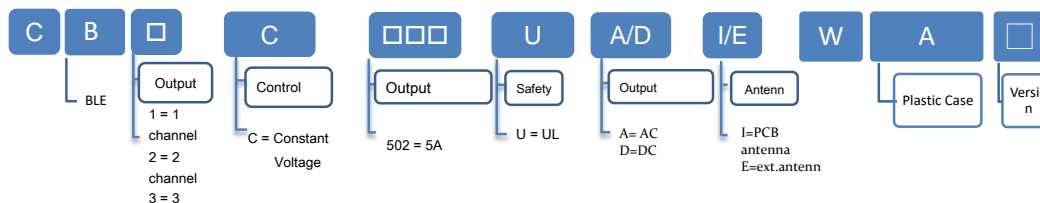
App Store for iOS

Play Store for Android

PRODUCT SPECIFICATION

MODEL	OUTPUT WATTAGE (W)	OUTPUT CHANNEL	OUTPUT CURRENT (A)	OUTPUT VOLTAGE (VDC)	INPUT CURRENT (A)	INPUT VOLTAGE (VDC)	External Antenna	Dimension (mm)
CLB1C502UDEWA0-00G	250	1	5	10-50	5.1	10-50	2.4GHz Antenna	66.8*35.2*24.2
CLB2C502UDEWA0-00G	250	2						
CLB3C502UDEWA0-00G	250	3						
CLB4C502UDEWA0-00G	250	4						84*40*25.2
CLB5C502UDEWA0-00G	250	5						

Model Number Code



Input Specifications

	Min.	Typ.	Max.	Units	Conditions/Description
Input Voltage Range	12		50	Vdc	for dc Voltage
Input Frequency Range		N/A		Hz	for dc Voltage
Input Current			5.1	A	for dc 12~50V

Output Specifications

	Min.	Typ.	Max.	Units	Conditions/Description
Output Voltage Range	12		50	Vdc	
Output Current			5	A	Per channel
Output Power			250	W	Per channel
Dimming Type		PWM			
Dimming Frequency		20K		Hz	
Dimming Voltage	0		3.3	Vdc	
Grayscale			256	Step	RGB respectively

Protection Functions

	Support (Yes/No)	Conditions/Description
Short Circuit Protection	Yes	

Environmental Conditions

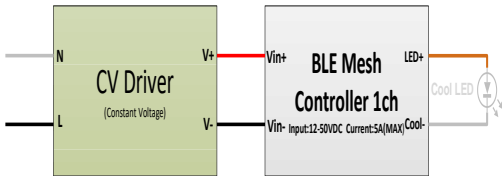
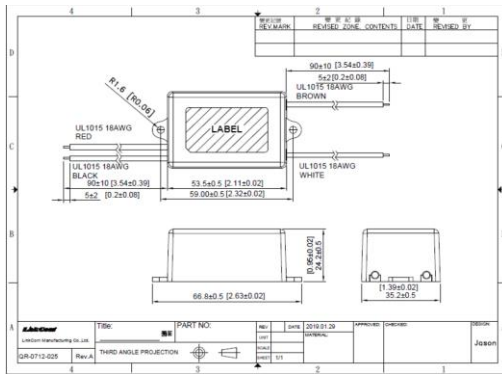
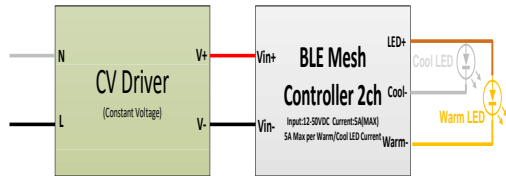
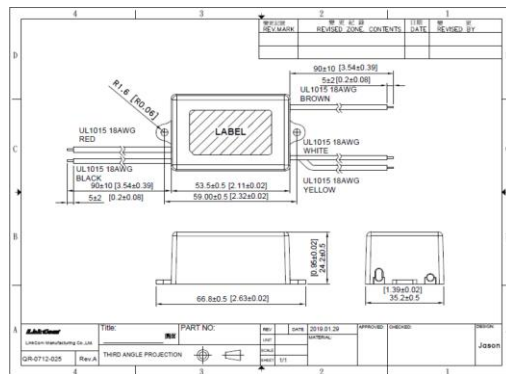
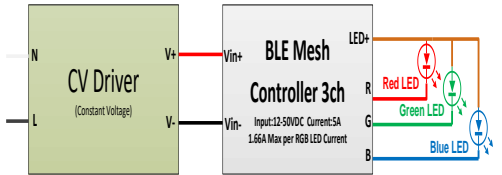
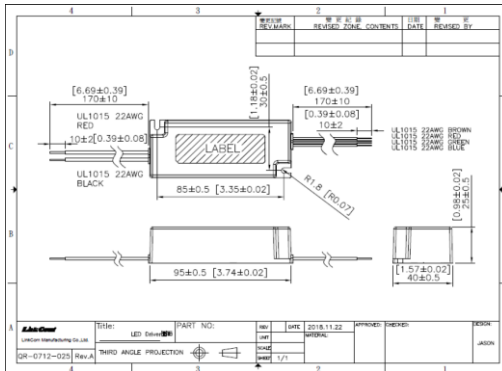
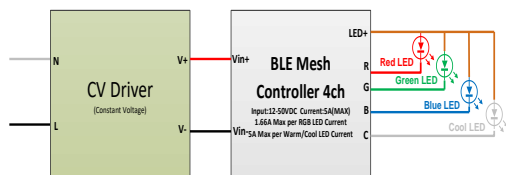
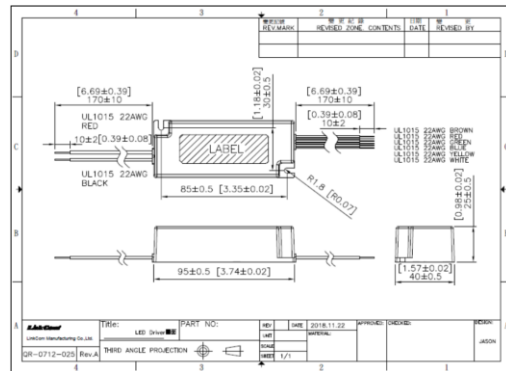
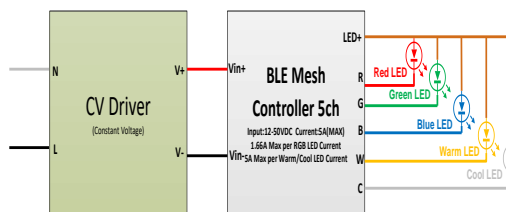
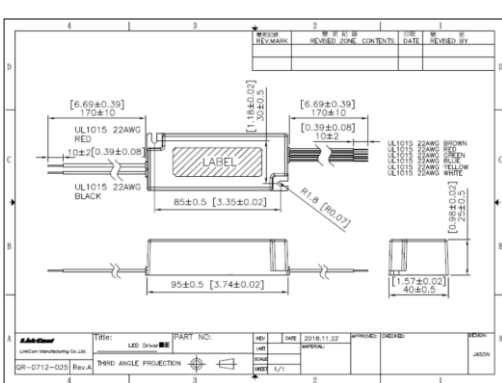
	Min.	Typ.	Max.	Units	Conditions/Description
Operating Temperature (Ta)	-20		50	°C	Non-condensing
Operating Humidity			90	%RH	Non-condensing
Operating Case Temperature (Tc)		N/A		°C	
Storage Temperature	-20		80	°C	Non-condensing
Storage Humidity	10		95	%RH	Non-condensing
Case Material		Plastic			
Weight		60		g	

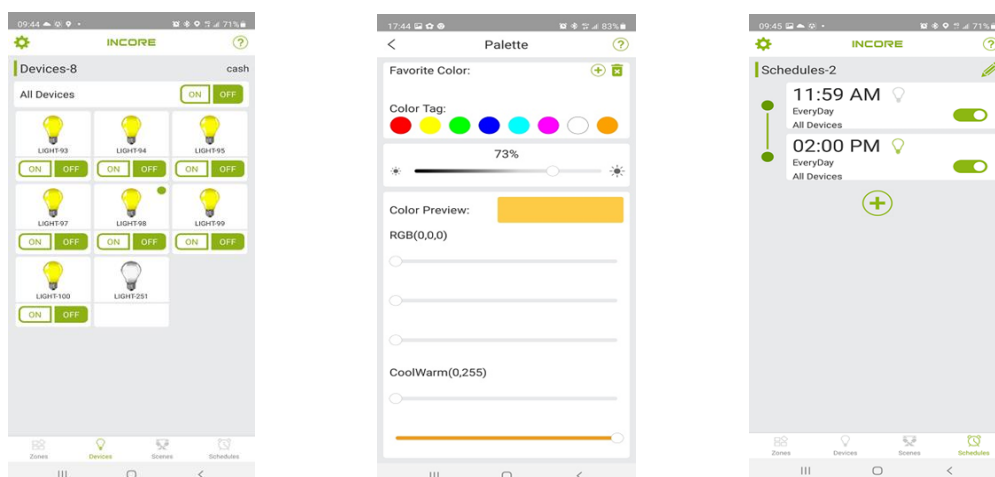
EMC Compliance and Safety

EMC Compliance	
Conducted and Radiated Emission	EMI: FCC Part 15 Class B / FCC Part 15 Class C
FCC ID	2AOC5LCBTMDXX

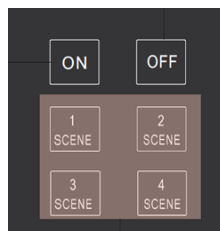
Notes:

(1) External antenna : VM-ASSY108

DIMENSION & WIRING DIAGRA**CLB1C502UDEWA0-00G****CLB2C502UDEWA0-00G****CLB3C502UDEWA0-00G****CLB4C502UDEWA0-00G****CLB5C502UDEWA0-00G**

APP APPLICATION**Accessories**

Description	P/N	Power supply
Remote Control	IRCB_2CW_U18SA0-00G	Battery AAA*2
Touch Panel	IBRS-T6A-00G	Battery CR2032*2
BLE PIR Sensor	IBAC0C-PIRE0	L/N AC Input 85-305Vac

Remote Control ShapePortable Touch PanelBLE PIR Sensor

* The above mechanical diagram is for reference only. The actual product should be in accordance with the specification for approval.

* REFERENCE: www.linkcom.com.tw