

INCORE APP Download



App Store for iOS



Play Store for Android



Low Voltage Input BLE Mesh Controller

PRODUCT HIGHLIGHT:

- AC Input: 12~18 Vac
- Output: 5 channels BLE Mesh controller
- Output Current 450mA Typ. (Cool & Warm Per Each Channel)
- Output Current 180mA Typ. (Per RGB Channel)
- Wireless dimming Range 1-100% via INCORE APP
- 5-channel output for RGBCW full color tuning
- Operating Ambient Temp.: -20°C~+50°C
- Warranty: 2 years (refer to warranty policy)
- Compact Size: 27mm*27mm*11mm Max

BLE MESH FEATURES:

- Auto pairing
- Transmission Range: 120m (in 4 jumps)
- RF Communication Type: 2.4 GHz
- High Speed Communication: <100ms
- Support iBeacon (Optional)
- Multiple Host
- CCT memories, Time Schedule, Group Setup, Sunrise to Sunset
- Remote Control and Wall Switch Accessory Available

PRODUCT SPECIFICATION

MODEL	INPUT VOLTAGE (VAC)	OUTPUT WATTAGE (W)	OUTPUT CURRENT (A)	OUTPUT CHANNEL	OUTPUT VOLTAGE (VDC)	EFFICIENCY (Typ.)	External Antenna	Dimension (mm)
CLB5PW03N6D02A-00	12V~18V	4.5W (MAX)	450mA (MAX)	Cool	5V~10V	72%	2.4GHz Antenna	27mm*27mm*11mm Max
				Warm				
				Red				
				Green				
				Blue				

Input Specifications

	Min.	Typ.	Max.	Units	Conditions/Description
Input Voltage Range		12	18	Vac	
Input Frequency Range		60		Hz	
Efficiency		72		%	Full Load

Output Specifications

	Min.	Typ.	Max.	Units	Conditions/Description
Output Voltage Range	5		10	Vdc	at 12Vac 60Hz
Output Current (Cool and Warm LED)	405	450	495	mA	Full Load
Output Current (RGB LED)	150	180	210	mA	Full Load
Dimming Type		PWM			
Dimming Frequency		20K		Hz	
Dimming Voltage	0		3.3	Vdc	
Grayscale			256	Step	RGB respectively

LED Specifications

	Min.	Typ.	Max.	Units	Conditions/Description
Forward Voltage (Cool LED)		3.0		V	
Forward Voltage (Warm LED)		3.0		V	
Forward Voltage (Red LED)		3.0		V	
Forward Voltage (Green LED)		3.0		V	
Forward Voltage (Blue LED)		3.0		V	

Protection Functions

	Support (Yes/No)	Conditions/Description
Short Circuit Protection	Yes	

Environmental Conditions

	Min.	Typ.	Max.	Units	Conditions/Description
Operating Temperature (Ta)	-20		50	°C	Non-condensing
Operating Humidity			90	%RH	Non-condensing
Operating Case Temperature (Tc)		N/A		°C	
Storage Temperature	-20		80	°C	Non-condensing
Storage Humidity	10		95	%RH	Non-condensing
Case Material		Open Frame			
Weight		12		g	

EMC Compliance and Safety

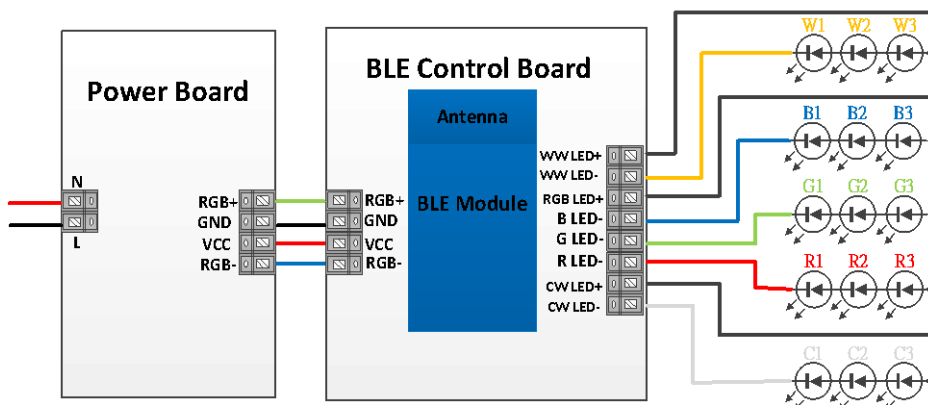
EMC Compliance	
Conducted and Radiated Emission	EMI: FCC Part 15 Class B / FCC Part 15 Class C
FCC ID	2AOC5LCBTMDXX

Notes:

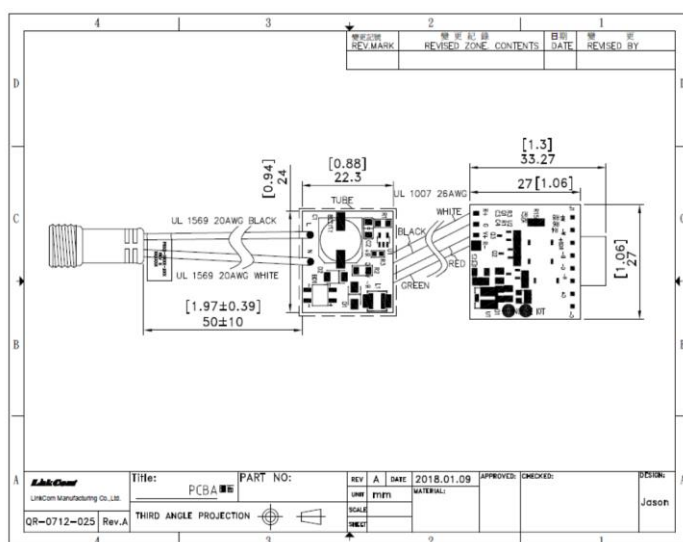
(1) External antenna : VM-ASSY108

DIMENSION & WIRING DIAGRAM

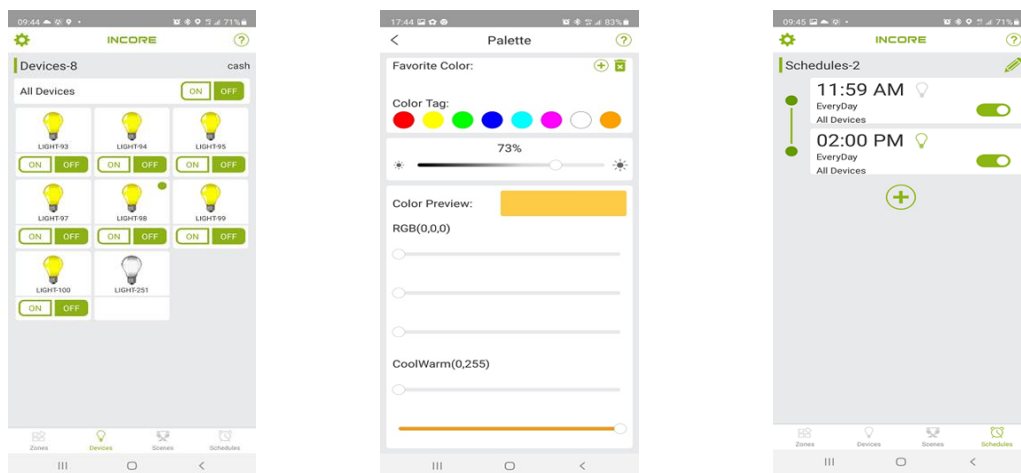
Block Diagram



Wiring Diagram



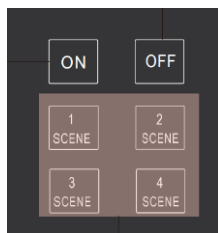
APP APPLICATION



Accessories

Description	P/N	Power supply
Remote Control	IRCB_2CW_U18SA0-00G	Battery AAA*2
Touch Panel	IBRS-T6A-00G	Battery CR2032*2
BLE PIR Sensor	IBAC0C-PIRE0	L/N AC Input 85-305Vac

Remote Control Shape

Portable Touch Panel

BLE PIR Sensor


* The above mechanical diagram is for reference only. The actual product should be in accordance with the specification for approval.

* REFERENCE: www.linkcom.com.tw